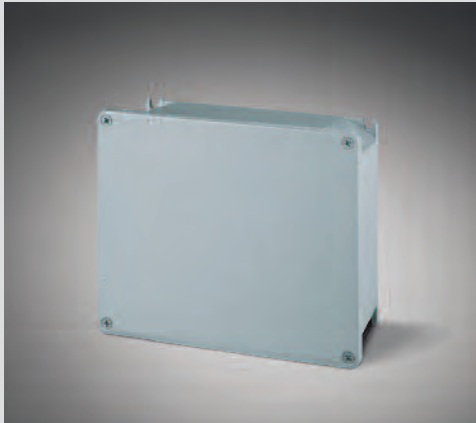


JUNCTION BOXES FOR ELECTRICAL INSTALLATIONS



VERSIONS

	Enclosure IP66
	Mounting plates
	DIN rail kit (horizontal and diagonal fixing)

REFERENCE STANDARDS

EN 60670-22
Boxes and enclosures for electrical accessories for household and similar fixed electrical installations. Part 22: particular requirements for connecting boxes and enclosures.

QUALITY MARKS



TECHNICAL CHARACTERISTICS

Protection degree:	IP66/67
Operating ambient temperature according to the reference standard:	-25°C +60°C
Max. operating ambient temperature (Short period):	-40°C +90°C
Material:	Aluminium alloy
IK degree at 20°C:	IK08
Cable inlets:	Blank sides
DIN rail fixing:	Yes
Colour:	Grey RAL 9006 with metallic pigments

Heavy duty appliance for internal industrial applications.

BEHAVIOUR WITH CHEMICAL AND ATMOSPHERIC AGENTS

Saline solution	Acids		Bases		Solvents				Mineral oil	UV rays
	Concentrated	Diluted	Concentrated	Diluted	Hexane	Benzol	Acetone	Alcohol		
Resistant	Limited Resistance	Resistant	Limited Resistance	Resistant	Limited Resistance	Limited Resistance	Limited Resistance	Resistant	Resistant	Resistant



Enclosures and covers in aluminium alloy with blank walls and covered.



Holding seal in expanded EPDM, already mounted in place on the cover.



Fixing to wall by brackets incorporated in the enclosure base.

APPLICATION EXAMPLES

