



TO SCAME CLIENTS

List of new available products

(Please refer to Sales Dept for part numbers and prices where not mentioned in the present document)

NEW PUBLICATION

LIBERA Series



From March 2017 the new ECOMOBILITY catalogue is available with the following new products:

- New wall box with power management,
- New Dual Wall Box,
- New DC charging stations.

English version: ZP00910-GB-2

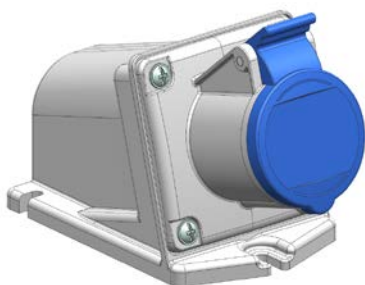
You can download it from here:

<http://www.scame.com/doc/ZP00910-GB-2.pdf>

NEW PRODUCT

XENIA Series

New 16A and 32A surface mounting sockets angled outlet IP44



XENIA Series offer is now completed by 16 and 32A surface mounting angled socket outlets.

The base has open threaded cable entry on top side only M25 for 16A and M32 for 32A.

The same cable entry is closed by a threaded cap suitable to be used as IP44 cable sleeve by a proper drilling.

Available with the same configurations of XENIA plugs

Please refer to pages 9-10 for relevant price list.

■ SURFACE MOUNTING SOCKET OUTLETS ANGLED OUTLET IP44 - Screw terminals

Poles	Hz	Volt	Color	h.	16A	32A
2P+E	50/60	100-130	Yellow	4	514.1650	514.3250
	50/60	200-250	Blue	6	514.1653	514.3253
3P+E	50/60	380-415	Red	6	514.1656	514.3256
3P+N+E	50/60	346-415	Red	6	514.1657	514.3257



OPTIMA Series

New 16 and 32A flush mounting sockets straight outlet IP44/IP54 and IP66/IP67



The new range of 16A and 32A flush mounting sockets straight outlet IP44/54 and IP66/67/69 OPTIMA Series replaces the old range from EUREKA Series adding new feature as IP54 and IP69 and new flange dimensions:

- Extra reduced flange 55x55 mm for 16A 2P+E, IP44/IP54 and IP66/IP67 versions
- Reduced flange 62x62 mm for 16A 2P+E and 3P+E, IP44/IP54 and IP66/IP67/IP69 versions

All the versions are anyway available with flange 75x75 as well as shown in the below grid.

Please refer to pages 9-10 for relevant price list.

FLANGE DIMENSIONS	16A IP44			16A IP67			32A IP44			32A IP67		
	2P+E	3P+E	3P+N+E	2P+E	3P+E	3P+N+E	2P+E	3P+E	3P+N+E	2P+E	3P+E	3P+N+E
55x55	X			X								
62x62	X	X		X	X							
75x75	X	X	X	X	X	X	X	X	X	X	X	X

■ FLUSH MOUNTING SOCKET OUTLETS IP44/IP54 - screw terminals

Poles	Hz	Volt	Color	h.	16A			32A
					75x75	62x62	55x55	75x75
2P+E	50/60	100-130	Yellow	4	423.1660	423.1660/R	423.1660/RR	423.3260
	50/60	200-250	Blue	6	423.1663	423.1663/R	423.1663/RR	423.3263
	50/60	380-415	Red	9	423.1668	423.1668/R	423.1668/RR	423.3268
	50/60	480-500	Grey	7	423.16636			423.32636
	50/60	trasf.	Grey	12	423.16633			423.32633
	>300-500	>50	Green	2	423.16632			423.32632
	c.c.	>50-250	Grey	3	423.16634			423.32634
	c.c.	>250	Grey	8	423.16638			423.32638
3P+E	50/60	100-130	Yellow	4	423.1661	423.1661/R		423.3261
	50/60	200-250	Blue	9	423.1664	423.1664/R		423.3264
	50/60	380-415	Red	6	423.1666	423.1666/R		423.3266
	60	440-460	Red	11	423.16665			423.32665
	50/60	480-500	Grey	7	423.16666			423.32626
	50/60	600-690	Black	5	423.16667			423.32667
	50...60	380...440	Red	3	423.16664			423.32664
	100-300	>50	Green	10	423.16661			423.32661
>300-500	>50	Green	2	423.16662			423.32662	
3P+N+E	50/60	100-130	Yellow	4	423.1662			423.3262
	50/60	208-250	Blue	9	423.1665			423.3265
	50/60	346-415	Red	6	423.1667			423.3267
	50/60	480-500	Grey	7	423.16676			423.32676
	50/60	600-690	Black	5	423.16677			423.32677
	60	440-460	Red	11	423.16675			423.32675
	50...60	380...440	Red	3	423.16674			423.32674
	>300-500	>50	Green	2	423.16672			423.32672



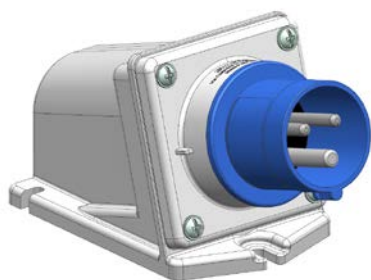
■ **FLUSH MOUNTING SOCKET OUTLETS**
IP66/IP67/IP69 - screw terminals

Poli	Hz	Volt	Colore	h.	16A			32A
					75x75	62x62	55x55	75x75
2P+T	50/60	100-130	Yellow	4	428.1660	428.1660/R	428.1660/RR	428.3260
	50/60	200-250	Blue	6	428.1663	428.1663/R	428.1663/RR	428.3263
	50/60	380-415	Red	9	428.1668	428.1668/R	428.1668/RR	428.3268
	50/60	480-500	Grey	7	428.16636			428.32636
	50/60	trasf.	Grey	12	428.16633			428.32633
	>300-500	>50	Green	2	428.16632			428.32632
	c.c.	>50-250	Grey	3	428.16634			428.32634
	c.c.	>250	Grey	8	428.16638			428.32638
3P+T	50/60	100-130	Yellow	4	428.1661	428.1661/R		428.3261
	50/60	200-250	Blue	9	428.1664	428.1664/R		428.3264
	50/60	380-415	Red	6	428.1666	428.1666/R		428.3266
	60	440-460	Red	11	428.16665			428.32665
	50/60	480-500	Grey	7	428.16666			428.32666
	50/60	600-690	Black	5	428.16667			428.32667
	50...60	380...440	Red	3	428.16664			428.32664
	100-300	>50	Green	10	428.16661			428.32661
>300-500	>50	Green	2	428.16662			428.32662	
3P+N+T	50/60	100-130	Yellow	4	428.1662			428.3262
	50/60	208-250	Blue	9	428.1665			428.3265
	50/60	346-415	Red	6	428.1667			428.3267
	50/60	480-500	Grey	7	428.16676			428.32676
	50/60	600-690	Black	5	428.16677			428.32677
	60	440-460	Red	11	428.16675			428.32675
	50...60	380...440	Red	3	428.16674			428.32674
	>300-500	>50	Green	2	428.16672			428.32672



OPTIMA Series

New 16 and 32A surface mounting appliance inlets IP44/IP54 and IP66/IP67



Further extension of OPTIMA Series with a new range of 16A and 32A surface mounting appliance inlets angled outlet. The angled base has open threaded cable entry on top side only with M25 thread size for 16A and M32 for 32A. IP66/IP67/69 version is ensured by a threaded cap with related gasket while IP44/IP54 versions by a threaded soft rubber cable sleeve.

The range covers standard hour position configurations 4h-6h-9h 2P+E, 4h-6h-9h-11h-3h 3P+E and 4h-6h-9h-11h-3h 3P+N+E for IP44/54 and all hour positions for IP66/67/69 versions.

Phase inverter feature is available as well as 16A and 32A, both in 3P+E and 3P+N+E configurations.

Please refer to pages 9-10 for relevant price list.

■ SURFACE MOUNTING APPLIANCE INLETS IP44/IP54

Poles	Hz	Volt	Color	h.	"STANDARD"		"REVERSE"	
					16A	32A	16A	32A
2P+E	50/60	100-130	Yellow	4	240.1690	240.3290		
	50/60	200-250	Blue	6	240.1693	240.3293		
	50/60	380-415	Red	9	240.1698	240.3298		
	50/60	480-500	Grey	7				
	50/60	trasf.	Grey	12				
	>300-500	>50	Green	2				
	c.c.	>50-250	Grey	3				
	c.c.	>250	Grey	8				
3P+E	50/60	100-130	Yellow	4	240.1691	240.3291		
	50/60	200-250	Blue	9	240.1694	240.3294		
	50/60	380-415	Red	6	240.1696	240.3296	240.1696RV	240.3296RV
	60	440-460	Red	11	240.16965	240.32965		
	50/60	480-500	Grey	7				
	50/60	600-690	Black	5				
	50...60	380...440	Red	3	240.16964	240.32964		
	100-300	>50	Green	10				
>300-500	>50	Green	2					
3P+N+E	50/60	100-130	Yellow	4	240.1692	240.3292		
	50/60	208-250	Blue	9	240.1695	240.3295		
	50/60	346-415	Red	6	240.1697	240.3297	240.1697RV	240.3297RV
	50/60	480-500	Grey	7				
	50/60	600-690	Black	5				
	60	440-460	Red	11	240.16975	240.32975		
	50...60	380...440	Red	3	240.16974	240.32974		
	>300-500	>50	Green	2				



■ **SURFACE MOUNTING APPLIANCE INLETS**
IP66/IP67/IP69

Poles	Hz	Volt	Color	h.	"STANDARD"		"REVERSE"	
					16A	32A	16A	32A
2P+E	50/60	100-130	Yellow	4	245.1690	245.3290		
	50/60	200-250	Blue	6	245.1693	245.3293		
	50/60	380-415	Red	9	245.1698	245.3298		
	50/60	480-500	Grey	7	245.16936	245.32936		
	50/60	trasf.	Grey	12	245.16933	245.32933		
	>300-500	>50	Green	2	245.16932	245.32932		
	c.c.	>50-250	Grey	3	245.16934	245.32934		
	c.c.	>250	Grey	8	245.16938	245.32938		
3P+E	50/60	100-130	Yellow	4	245.1691	245.3291		
	50/60	200-250	Blue	9	245.1694	245.3294		
	50/60	380-415	Red	6	245.1696	245.3296	245.1696RV	245.3296RV
	60	440-460	Red	11	245.16965	245.32965		
	50/60	480-500	Grey	7	245.16966	245.32966		
	50/60	600-690	Black	5	245.16967	245.32967		
	50...60	380...440	Red	3	245.16964	245.32964		
	100-300	>50	Green	10	245.16961	245.32961		
>300-500	>50	Green	2	245.16962	245.32962			
3P+N+E	50/60	100-130	Yellow	4	245.1692	245.3292		
	50/60	208-250	Blue	9	245.1695	245.3295		
	50/60	346-415	Red	6	245.1697	245.3297	245.1697RV	245.3297RV
	50/60	480-500	Grey	7	245.16976	245.32976		
	50/60	600-690	Black	5	245.16977	245.32977		
	60	440-460	Red	11	245.16975	245.32975		
	50...60	380...440	Red	3	245.16974	245.32974		
	>300-500	>50	Green	2	245.16972	245.32972		

BLUELINE Series



A new adaptor enters BLUELINE family, to complete the range:

- French/German Plug
- 2 P11/P17 socket + 1 P40 socket

Please refer to pages 9-10 for relevant price list.

Catalogue Number	Description	Pack Qty.
146.362	Adaptor with French/German Plug 2xP11/P17 + 1xP40 sockets – White	25/250
146.362/N	Adaptor with French/German Plug 2xP11/P17 + 1xP40 sockets – Black	25/250



DATATEL Series



New products enters DATATEL Series. These new items will increase the number of accessories for ADSL and the patch cord to connecting the TV

Please refer to pages 9-10 for relevant price list.

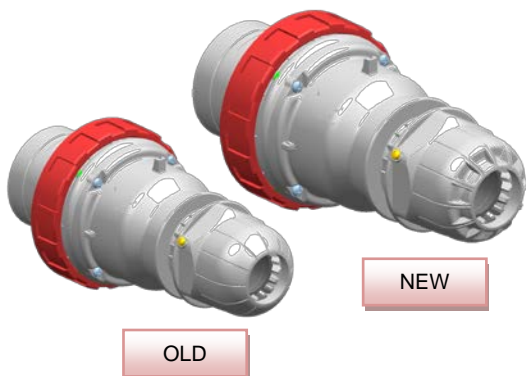
Catalogue Number	Description
180.7951	Coupler line/line 8/8c.
180.572	Switch ADSL plug/ socket outlet 3P
180.573	Switch ADSL 2 plug 6/2

Catalogue Number	Description
180.5912	Patch cord TV 9.5mm 2m – straight plug + straight connector + adpt white
180.5913	Patch cord TV 9.5mm 3m – straight plug + straight connector + adpt white
180.5915	Patch cord TV 9.5mm 5m – straight plug + straight connector + adpt white
180.5902	Patch cord TV 9.5mm 2m – straight plug + 90° connector white
180.5902/N	Patch cord TV 9.5mm 2m – straight plug + 90° connector black

PRODUCT UPDATE

OPTIMA Series

63A and 125A OPTIMA plugs and connectors: new esthetics for external cable clamp



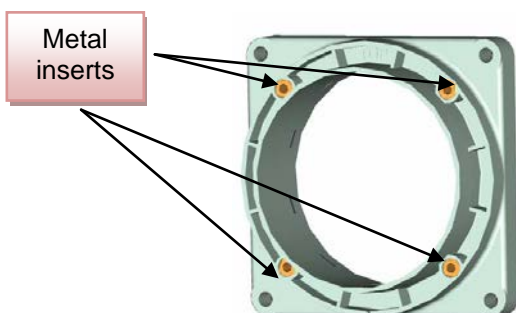
The new design of the cable gland increases grip for a better tightening operation and, thanks to the strengthening ribs, the impact resistance of this core element of the system.

The picture shows the difference between the product before and after the modification.



OPTIMA Series

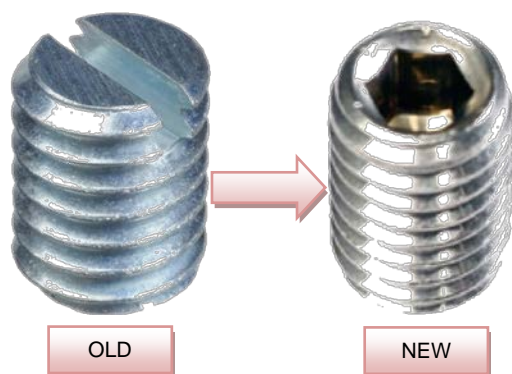
63A and 125A flush mounting appliance inlets and sockets with straight outlet: increased strain relief



This modification has been applied to improve the strain relief during withdrawal operations in tough working conditions as high ambient temperature or roughing of pins caused by fouling and oxidation provoked by unsteady contacts between pin and contact tube. This result has been achieved by replacing previous brass inserts (shown in the picture) with special assembling self-threading screws.

OPTIMA Series

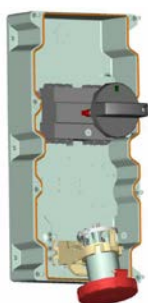
Terminal screws modification in 125A plugs and sockets



125A plugs and sockets terminals are now equipped with new Allen screws replacing the previous slotted grub screws. The hexagonal socket in the screw head allows higher tightening torque so to have higher contact pressure equal to have more efficient connections.

ADVANCE-GRP Series

I-DEVICE removal from interlocked sockets ADVANCE-GRP 125A



Starting from April 2017 125A interlocked sockets from ADVANCE-GRP Series will not be equipped anymore with I-Device feature. This is to allow, in case of bottom entry line, more internal room for a better arrangement of the cable, usually thick and less flexible when it comes to a 125A device.



PRODUCT OUT OF PRODUCTION

EUREKA-MIL Series



Starting from June 2017 EUREKA-MIL Series will not be available anymore. It will be possible to offer plugs and sockets of the same color (Green RAL 6031-F9) as OPTIMA Series managed as special products therefore strictly related to a minimum order quantity of 100 pcs for each part number. Scame compliance to NCAGE identification number remains valid for all Scame products.

EUREKA Series

From January 2018 flush mounting sockets straight outlet from EUREKA Series will not be available anymore. As a replacement the new range of OPTIMA Series family 423. and 428. is already available which in addition includes the 55x55 extra reduced flange versions and a wider range with the 62x62 reduced flange (see the relevant news in the present document SIS.68)

Here below the part numbers conversion table from previous EUREKA Series to new OPTIMA Series:

■ **FLUSH MOUNTING SOCKETS STRAIGHT OUTLET IP44**

Poles	Color	h.	75X75		62X62		75X75	
			EUREKA	OPTIMA	EUREKA	OPTIMA	EUREKA	OPTIMA
2P+E	Yellow	4	422.1660	423.1660	422.1660/R	423.1660/R	422.3260	423.3260
	Blue	6	422.1663	423.1663	422.1663/R	423.1663/R	422.3263	423.3263
	Red	9	422.1668	423.1668	422.1668/R	423.1668/R	422.3268	423.3268
	Grey	7	422.16636	423.16636			422.32636	423.32636
	Grey	12	422.16633	423.16633			422.32633	423.32633
	Green	2	422.16632	423.16632			422.32632	423.32632
	Grey	3	422.16634	423.16634			422.32634	423.32634
3P+E	Red	8	422.16638	423.16638			422.32638	423.32638
	Yellow	4	422.1661	423.1661			422.3261	423.3261
	Blue	9	422.1664	423.1664			422.3264	423.3264
	Red	6	422.1666	423.1666			422.3266	423.3266
	Red	11	422.16665	423.16665			422.32665	423.32665
	Grey	7	422.16666	423.16666			422.32626	423.32626
	Black	5	422.16667	423.16667			422.32667	423.32667
3P+N+E	Red	3	422.16664	423.16664			422.32664	423.32664
	Green	10	422.16661	423.16661			422.32661	423.32661
	Green	2	422.16662	423.16662			422.32662	423.32662
	Yellow	4	422.1662	423.1662			422.3262	423.3262
	Blue	9	422.1665	423.1665			422.3265	423.3265
	Red	6	422.1667	423.1667			422.3267	423.3267
	Grey	7	422.16676	423.16676			422.32676	423.32676
3P+N+E	Black	5	422.16677	423.16677			422.32677	423.32677
	Red	11	422.16675	423.16675			422.32675	423.32675
	Red	3	422.16674	423.16674			422.32674	423.32674
	Green	2	422.16672	423.16672			422.32672	423.32672



■ FLUSH MOUNTING SOCKETS STRAIGHT OUTLET IP66/IP67

Poles	Color	h.	75X75		75X75	
			EUREKA	OPTIMA	EUREKA	OPTIMA
2P+E	Yellow	4	427.1660	428.1660	427.3260	428.3260
	Blue	6	427.1663	428.1663	427.3263	428.3263
	Red	9	427.1668	428.1668	427.3268	428.3268
	Grey	7	427.16636	428.16636	427.32636	428.32636
	Grey	12	427.16633	428.16633	427.32633	428.32633
	Green	2	427.16632	428.16632	427.32632	428.32632
	Grey	3	427.16634	428.16634	427.32634	428.32634
	Grey	8	427.16638	428.16638	427.32638	428.32638
3P+E	Yellow	4	427.1661	428.1661	427.3261	428.3261
	Blue	9	427.1664	428.1664	427.3264	428.3264
	Red	6	427.1666	428.1666	427.3266	428.3266
	Red	11	427.16665	428.16665	427.32665	428.32665
	Grey	7	427.16666	428.16666	427.32666	428.32666
	Black	5	427.16667	428.16667	427.32667	428.32667
	Red	3	427.16664	428.16664	427.32664	428.32664
	Green	10	427.16661	428.16661	427.32661	428.32661
3P+N+E	Green	2	427.16662	428.16662	427.32662	428.32662
	Yellow	4	427.1662	428.1662	427.3262	428.3262
	Blue	9	427.1665	428.1665	427.3265	428.3265
	Red	6	427.1667	428.1667	427.3267	428.3267
	Grey	7	427.16676	428.16676	427.32676	428.32676
	Black	5	427.16677	428.16677	427.32677	428.32677
	Red	11	427.16675	428.16675	427.32675	428.32675
	Red	3	427.16674	428.16674	427.32674	428.32674
Green	2	427.16672	428.16672	427.32672	428.32672	

PRICE LIST

Cat. Number	Price List €	Cat. Number	Price List €	Cat. Number	Price List €
146.362	4,95	240.1695	13,60	240.3295	16,14
146.362/N	4,95	240.1696	9,15	240.3296	13,05
180.572	10,82	240.16964	11,02	240.32964	15,88
180.573	8,86	240.16965	11,02	240.32965	15,88
180.7951	1,96	240.1696RV	12,17	240.3296RV	17,73
180.5902	2,01	240.1697	11,28	240.3297	13,32
180.5902/N	2,01	240.16974	13,60	240.32974	16,14
180.5912	2,06	240.16975	13,60	240.32975	16,14
180.5913	2,88	240.1697RV	15,23	240.3297RV	18,11
180.5915	4,02	240.1698	9,94	240.3298	14,93
240.1690	8,65	240.3290	14,93	245.1690	12,23
240.1691	11,02	240.3291	15,88	245.1691	14,39
240.1692	13,60	240.3292	16,14	245.1692	17,47
240.1693	8,33	240.3293	12,36	245.1693	11,28
240.1694	11,02	240.3294	15,88		



Cat. Number	Price List €
245.16932	13,60
245.16933	13,60
245.16934	13,60
245.16936	13,60
245.16938	13,60
245.1694	14,39
245.1695	17,47
245.1696	11,83
245.16961	14,39
245.16962	14,39
245.16964	14,39
245.16965	14,39
245.16966	14,39
245.16967	14,39
245.1696RV	16,00
245.1697	14,39
245.16972	17,47
245.16974	17,47
245.16975	17,47
245.16976	17,47
245.16977	17,47
245.1697RV	19,65
245.1698	13,60
245.3290	18,30
245.3291	19,36
245.3292	21,12
245.3293	15,06
245.32932	18,30
245.32933	18,30
245.32934	18,30
245.32936	18,30
245.32938	18,30
245.3294	15,88
245.3295	21,12
245.3296	15,88
245.32961	19,36
245.32962	19,36
245.32964	15,88
245.32965	19,36
245.32966	19,36
245.32967	19,36
245.3296RV	21,77
245.3297	17,22
245.32972	21,12
245.32974	21,12
245.32975	21,12
245.32976	21,12
245.32977	21,12
245.3297RV	23,68
245.3298	18,30
423.1660	5,99
423.1660/R	5,99

Cat. Number	Price List €
423.1660/RR	5,99
423.1661	6,77
423.1661/R	6,77
423.1662	8,44
423.1663	5,16
423.1663/R	5,16
423.1663/RR	5,16
423.16632	6,47
423.16633	6,47
423.16634	6,47
423.16636	6,47
423.16638	6,47
423.1664	5,86
423.1664/R	5,86
423.1665	8,97
423.1666	5,60
423.1666/R	5,60
423.16661	7,00
423.16662	7,00
423.16664	7,00
423.16665	7,00
423.16666	7,00
423.16667	7,00
423.1667	7,64
423.16672	9,57
423.16674	9,57
423.16675	9,57
423.16676	9,57
423.16677	9,57
423.1668	6,40
423.1668/R	6,40
423.1668/RR	6,40
428.1660	9,17
428.1660/R	9,17
428.1660/RR	9,17
428.1661	11,24
428.1661/R	11,24
428.1662	12,31
428.1663	8,38
428.1663/R	8,38
428.1663/RR	8,38
428.16632	10,46
428.16633	10,46
428.16634	10,46
428.16636	10,46
428.16638	10,46
428.1664	9,64
428.1664/R	9,64
428.1665	12,41
428.1666	9,28
428.1666/R	9,28
428.16661	11,62

Cat. Number	Price List €
428.16662	11,62
428.16664	11,62
428.16665	11,62
428.16666	11,62
428.16667	11,62
428.1667	11,35
428.16672	14,20
428.16674	14,20
428.16675	14,20
428.16676	14,20
428.16677	14,20
428.1668	10,16
428.1668/R	10,16
428.1668/R	10,16
428.1668/RR	10,16
428.3260	13,69
428.3261	15,98
428.3262	17,67
428.3263	13,03
428.32632	16,27
428.32633	16,27
428.32634	16,27
428.32636	16,27
428.32638	16,27
428.3264	13,61
428.3265	17,53
428.3266	13,10
428.32661	16,36
428.32662	16,36
428.32664	13,10
428.32665	16,36
428.32666	16,36
428.32667	16,36
428.3267	14,28
428.32672	17,87
428.32674	17,87
428.32675	17,87
428.32676	17,87
428.32677	17,87
428.3268	15,98
514.1650	7,06
514.1653	6,35
514.1656	7,49
514.1657	7,65
514.3250	10,17
514.3253	9,67
514.3256	9,86
514.3257	12,03