



## TO SCAME CLIENTS

### List of new available products

(Refer to Commercial Dept for item codes and prices)

### Domestic plugs and connectors IP44

- Trading of domestic plugs and connectors IP44

New range of domestic plugs and connectors IP44. These products will maintain the brand of supplier.

- German/French Plug
- German Socket with shutters
- French socket with shutters



### OPTIMA-HD Series

- Plugs and connectors 6h clock position

To completion of Optima HD series it has been extended the offer by the creation new codes for 16, 32, 63 and 125A with 6h standard clock position.

The main features of this range are an high degree of impact resistance to impact conditions (IK10 degree according EN 50102) more than 20J even under limit temperature (-40°C + 60°C), an excellent heat and fire resistance (G.W.T. 960°C according to the standard EN 60695-2-1) and 5VA (according to the standard UL94) and outstanding resistance to UV radiation.

Following the new part numbers of the items:



Plug	Connector	Description		
218.1633.KX	318.1643.KX	2P+E	16A	6h
218.3233.KX	318.3243.KX	2P+E	32A	6h
218.6333.KX	318.6343.KX	2P+E	63A	6h
218.12533.KX	318.12543.KX	2P+E	125A	6h
218.1636.KX	318.1646.KX	3P+E	16A	6h
218.3236.KX	318.3246.KX	3P+E	32A	6h
218.6336.KX	318.6346.KX	3P+E	63A	6h
218.12536.KX	318.12546.KX	3P+E	125A	6h
218.1637.KX	318.1647.KX	3P+N+E	16A	6h
218.3237.KX	318.3247.KX	3P+N+E	32A	6h
218.6337.KX	318.6347.KX	3P+N+E	63A	6h
218.12537.KX	318.12547.KX	3P+N+E	125A	6h



## EUREKA-HD Series

- Plugs and connectors double listed 16/20A e 32/30A IP44 (splashproof) and IP67 (watertight)

From March 2014 new range of products of UL ratings Eureka HD series will be available.

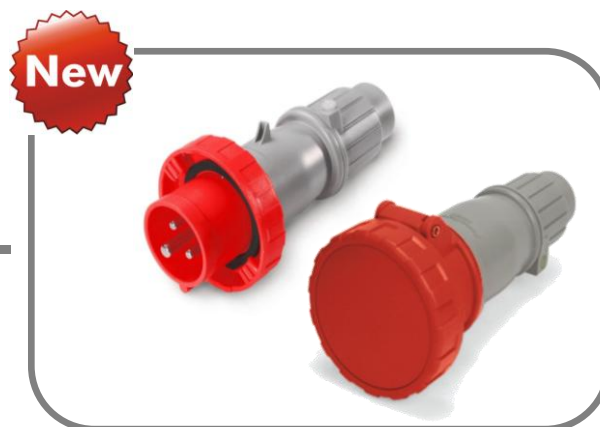
This range is referred to Pin & sleeve plugs and connectors with dual listings.

These products are UL 1682 listed and CSA certified to #182.1 for North American market.

In addition they are CE listed in according to IEC60309 for European and international markets.

These plugs and connectors are particularly suitable for the data center and server industry markets, but given that they are dual rated for both North American and international standards, customers can use the same products for multiple electrical configurations.

Below the part numbers of the range:



Plug	Connector	Description			
SCM420P6S	SCM420C6S	3P+E	20A	6H	IP44
SCM520P6S	SCM520C6S	3P+N+E	20A	6H	IP44
SCM430P6S	SCM430C6S	3P+E	30A	6H	IP44
SCM530P6S	SCM530C6S	3P+N+E	30A	6H	IP44
SCM420P6W	SCM420C6W	3P+E	20A	6H	IP67
SCM520P6W	SCM520C6W	3P+N+E	20A	6H	IP67
SCM430P6W	SCM430C6W	3P+E	30A	6H	IP67
SCM530P6W	SCM530C6W	3P+N+E	30A	6H	IP67



## ISOLATORS Series

- New enclosed switches ISOLATORS Series with red/yellow handle padlockable in OFF (0) and ON (I) position.



In the new catalogue dedicated to Isolators range and in the new edition of general catalogue, the emergency version of whole Isolators range will be padlockable only in OFF (0) position, unlike the previous one which was padlockable in both OFF(0) and ON (I) positions.

In parallel a new version for general use with red/yellow handle will be available for 20A-32A-40A-63A-80A e 100A 2P, 3P 3P+N e 20A-32A-40A 6 e 8.

This new version will be lockable in both OFF(0) and ON (I) positions as well as the black/grey handle version for general use applications.

All version, both emergency and general use (black/grey or red/yellow handle), will be lockable in OFF (0) position with max 3 padlocks, while general use (black/grey or red/yellow handle) will be lockable in ON (position) only with 1 padlock.

Such characteristic is important to get the maximum flexibility about the possibility to padlock the handle, and in order to avoid the possibility to padlock in ON(I) position emergency version. Following the part numbers of the new red/yellow handle general use version, padlockable in both OFF(0) and ON (I) positions:

Thermoplastic enclosure	Aluminium enclosure	Rated current	Number of poles	Enclosure dimensions	Pack Qty.
590.EL1606	590.HEL1606	16A	6	210x155x107	1/5
590.EL1608	590.HEL1608	16A	8	210x155x107	1/5
590.EL2012	590.HEL2002	20A	2	150x105x82	1/5
590.EL2013	590.HEL2003	20A	3	150x105x82	1/5
590.EL2015	590.HEL2005	20A	3+N	150x105x82	1/5
590.EL2506	590.HEL2506	25A	6	210x155x107	1/5
590.EL2508	590.HEL2508	25A	8	210x155x107	1/5
590.EL3212	590.HEL3202	32A	2	150x105x82	1/5
590.EL3213	590.HEL3203	32A	3	150x105x82	1/5
590.EL3215	590.HEL3205	32A	3+N	150x105x82	1/5
590.EL3206	590.HEL3206	32A	6	210x155x107	1/5
590.EL3208	590.HEL3208	32A	8	210x155x107	1/5
590.EL4012	590.HEL4002	40A	2	150x105x82	1/5
590.EL4013	590.HEL4003	40A	3	150x105x82	1/5
590.EL4015	590.HEL4005	40A	3+N	150x105x82	1/5
590.EL4006	590.HEL4006	40A	6	210x155x107	1/5
590.EL4008	590.HEL4008	40A	8	210x155x107	1/5
590.EL6302	590.HEL6302	63A	2	210x155x107	1/5
590.EL6303	590.HEL6303	63A	3	210x155x107	1/5
590.EL6305	590.HEL6305	63A	3+N	210x155x107	1/5
590.EL8002	590.HEL8002	80A	2	210x155x107	1/5
590.EL8003	590.HEL8003	80A	3	210x155x107	1/5
590.EL8005	590.HEL8005	80A	3+N	210x155x107	1/5
590.EL10003	590.HEL10003	100A	3	210x155x107	1/5
590.EL10005	590.HEL10005	100A	3+N	210x155x107	1/5



## ISOLATORS-HD Series (ATEX Ex)

The Safety Switch hereby in the following table will be equipped with cable glands and stopping plug suitable for use in areas at risk of explosion, suitable for the category 2D, zone 21 and 22.



Rated Current	Catalogue Number		Upgrade
	Emergency	General Use	
20A	590.XEM2002	590.XGE2002	2 x Cable Glands M25 1 Blanking Plug
	590.XEM2003	590.XGE2003	
	590.XEM2004	590.XGE2004	
32/40A	590.XEM3202	590.XGE3202	2 x Cable Glands M32 1 Blanking Plug
	590.XEM3203	590.XGE3203	
	590.XEM3204	590.XGE3204	
	590.XEM4002	590.XGE4002	
	590.XEM4003	590.XGE4003	
	590.XEM4004	590.XGE4004	

SCAME PARRE S.p.A.  
Marketing Dept.