



## TO SCAME CLIENTS

### List of new available products

(Refer to Commercial Dept for item codes and prices)

#### BLUELINE Series

- Saving space adaptors

New saving space domestic adaptors in BLUELINE series. Available only with Italian plug, in white or black versions.



#### ■ One way adaptors

Code	Description	Pack Qty.
146.661	10A 2P+E - P30 – White	50/500 (*)
146.661/N	10A 2P+E - P30 – Black	50/500 (*)

#### ■ Three way adaptors

Code	Description	Pack Qty.
146.561	16A 2P+E - 2xBiv/1xP30 – White	25/250 (*)
146.561/N	16A 2P+E - 2xBiv/1xP30 – Black	25/250 (*)

(\*) Single Packing

#### OPTIMA Series

- New flush and surface mounting socket and appliance inlets 63A and 125A with crimp terminal and reinforced flange



At the beginning of 2014 will be available new flush and mounting angled outlet sockets and appliance inlets and mounting boxes 63A and 125A with crimp terminal and reinforced mounting frame.

This range will be completed with flush mounting straight outlet sockets.

The main new characteristics are the crimp terminal as for the plugs and connectors, and a reinforced mounting frame with a greater thickness. Furthermore the flange of straight outlet flush mounting sockets and appliance inlet will have metric thread inserts in order to make easier the assembling of the contact carrier on the mounting frame .

The color of the new range will be a clearer grey RAL7035 for the flush mounting sockets as for the 16 and 32A version, and a darker grey 7004 for straight outlet flush mounting sockets and appliance inlet.

Drilling plans of flush mounting angled outlet sockets 63A and 125A, will be slightly modified.

The new drilling plane will be available soon in our web site, and updated in the next edition of the catalogue.

As soon as new flush mounting angled outlet sockets 63A and 125A will be certified, they will replace the old products into surface mounting version. The new code are the following:



Polarity	Hz	Volt	Color	h.	Fam. 248.		Fam. 418.		Fam. 428.	
					63A CODE	125A CODE	63A CODE	125A CODE	63A CODE	125A CODE
2P+E	50/60	100-130	Yellow	4	248.6390	248.12590	418.6360	418.12560	428.6360	428.12560
	50/60	200-250	Blue	6	248.6393	248.12593	418.6363 [*]	418.12563 [*]	428.6363	428.12563
	50/60	380-415	Red	9	248.6398	248.12598	418.6368	418.12568	428.6368	428.12568
	50/60	480-500	Grey	7	248.63936	248.125936	418.63636	418.125636	428.63636	428.125636
	50/60	trasf.	Grey	12	248.63933	248.125933	418.63633	418.125633	428.63633	428.125633
	>300-500	>50	Green	2	248.63932	248.125932	418.63632	418.125632	428.63632	428.125632
	c.c.	>50-250	Grey	3	248.63934	248.125934	418.63634	418.125634	428.63634	428.125634
	c.c.	>250	Grey	8	248.63938	248.125938	418.63638	418.125638	428.63638	428.125638
3P+E	50/60	100-130	Yellow	4	248.6391	248.12591	418.6361	418.12561	428.6361	428.12561
	50/60	200-250	Blue	9	248.6394	248.12594	418.6364	418.12564	428.6364	428.12564
	50/60	380-415	Red	6	248.6396	248.12596	418.6366 [*]	418.12566 [*]	428.6366	428.12566
	60	440-460	Red	11	248.63965	248.125965	418.63665	418.125665	428.63665	428.125665
	50/60	480-500	Grey	7	248.63966	248.125966	418.63666	418.125666	428.63666	428.125666
	50/60	600-690	Black	5	248.63967	248.125967	418.63667	418.125667	428.63667	428.125667
	50...60	380...440	Red	3	248.63964	248.125964	418.63664	418.125664	428.63664	428.125664
	100-300	>50	Green	10	248.63961	248.125961	418.63661	418.125661	428.63661	428.125661
>300-500	>50	Green	2	248.63962	248.125962	418.63662	418.125662	428.63662	428.125662	
3P+N+E	50/60	100-130	Yellow	4	248.6392	248.12595	418.6362	418.12565	428.6362	428.12565
	50/60	208-250	Blue	9	248.6395	248.12595	418.6365	418.12565	428.6365	428.12565
	50/60	346-415	Red	6	248.6397	248.12597	418.6367 [*]	418.12567 [*]	428.6367	428.12567
	50/60	480-500	Grey	7	248.63976	248.125976	418.63676	418.125676	428.63676	428.125676
	50/60	600-690	Black	5	248.63977	248.125977	418.63677	418.125677	428.63677	428.125677
	60	440-460	Red	11	248.63975	248.125975	418.63675 [*]	418.125675	428.63675	428.125675
	50...60	380...440	Red	3	248.63974	248.125974	418.63674	418.125674	428.63674	428.125674
	>300-500	>50	Green	2	248.63972	248.125972	418.63672	418.125672	428.63672	428.125672

**[\*] ATTENTION:**

**Codes already existing another old product flush mounting sockets straight outlet.  
For these version move to fam 428.**

In that old products (418.) there are the following codes:

- 418.6363 - 418.6366 - 418.6367 - 418.63675
- 418.12563 - 418.12566 - 418.12567



## ISOLATORS Series

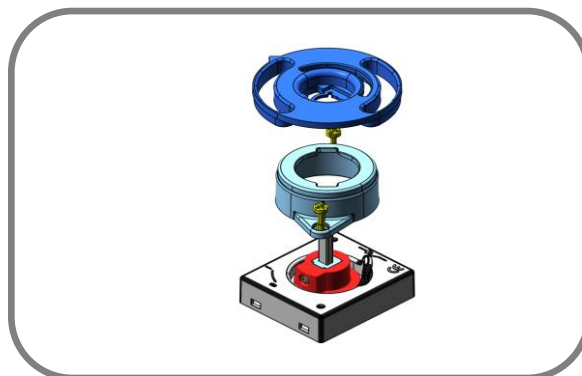
- Door interlock for enclosed switches

From February 2014 all enclosed switches Isolators series will be equipped with door-interlock as standard equipment.

The function of door-interlock is to prevent opening in "on" position.

Consequently the kits currently available in the catalogue will remain available but not showed in the catalogue in order to allow to end user or wholesales which have in their stock some not door-interlocked equipped version, to fit them out with door interlocking kit, or as spare part.

The codes won't change and this characteristic will be shown and emphasized in the catalogue and in all publications related to Isolators series.



## ISOLATORS Series

- Enclosed switches 3P+N with early make and late break neutral pole

In the new catalogue dedicated to Isolators range and in the new edition of general catalogue, old 4P Isolator version will be replaced from the new version 3P+N with early make and late break neutral pole. This characteristic is very important in order to guarantee the closing of the neutral pole before the closing of the phase poles and conversely the neutral later opening then the phase pole ones, so that eventual downstream single phase loads will be powered only after the presence of the neutral.

For thermoplastic and aluminium enclosed switches up to 80A will remain available also the 4P version with simultaneous closing and opening because it is necessary to operate at Direct current with poles in series.

For all other items, only 3P+N version will be available because they are not able to operating in direct current.

The new 3P+N version with early make and late break neutral pole, will have the final digit 5 instead 4 used until now for 4P versions.





## REMOVAL OF SURFACE MOUNTING SOCKETS AND APPLIANCE INLET 63A AND 125A WITH PG THREAD ENTRY

The codes surface mounting sockets, surface mounting appliance inlet and surface mounting boxes 63A and 125A with PG entry will be removed from the catalogue. Only metric thread entry version will remain available.

The products mentioned above will be supplied with metric thread cable gland and related seal. Removal of surface mounting socket and appliance inlet 63A and 125A with PG thread entry



### DOMO Series

- Knock outs replacement with self-centering punch marks on boxes DOMO Series 16A and 32A

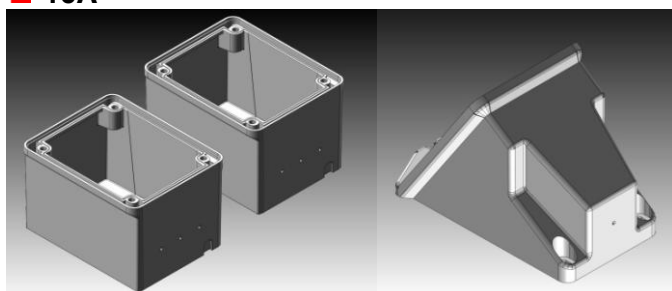


From September 2013 in order to increase the flexibility of the entries of the boxes 570 series 16A e 32A, knock outs will be replaced with self-centering punch marks.

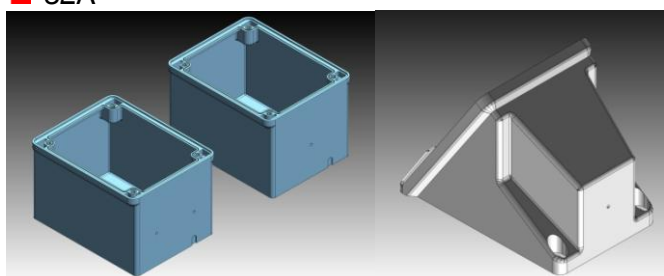
Consequently the modification will be apply on all products using the boxes 570 series, as surface mounting industrial sockets fam. 522,512, 527 e 517 and surface mounting residential sockets Domo series fam 570.

With this solution will be eliminated the codes with the identification "M" for the metric entries.

#### ■ 16A



#### ■ 32A

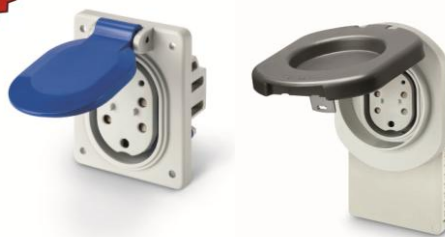




## LIBERA Series

- Communication of modification

**New**



Scame Parre S.p.A. informs the socket-outlet Type 3C (200.33263) and the socket-outlet with lock Type 3C (200.33263B) have been modified.

In order to reduce the force to insert and to withdraw the plug, and to make the connection more user-friendly, the silver plate of sleeves has been removed.

The modification doesn't affect the performance (see table below) and it started on 22 July 2013.

Test	Silver plated sleeves	Brass sleeves
Insert and withdraw test (new sample)	197N in 156N out	90N in 64N out
Temperature rise test (new sample)	33K	37K
Normal operation test: 50 cycles under load 10.000 cycles no-load	POSITIVE	POSITIVE
Insert and withdraw test (after normal operation test)	110N in 105N out	109N in 93N out
Temperature rise test (after normal operation test)	32K	36K



**New**

## LIBERA Series

- Z.E. READY



According to the Renault procedure, all Scame charging stations passed the qualification test to check the compliance with Z.E. Ready 1.2 requirements and to verify the proper charge of Renault vehicles (Twizy, Kangoo, Fluence and Zoè).

Moreover, as per license agreement with Renault, Scame is allowed to release Z.E. Ready 1.2 certification and label for its own products if installed by a Scame installation Partner.

For more information about Scame products, certification process and to become a Scame partner, please contact us at [info@scame.com](mailto:info@scame.com)



SCAME PARRE S.p.A.  
Marketing Dept.