



**TO ALL OUR CUSTOMERS**

**NEW 1. TREND SERIES – MULTI-OUTLET SOCKET 2+4 WITH LIGHTING PROTECTION**

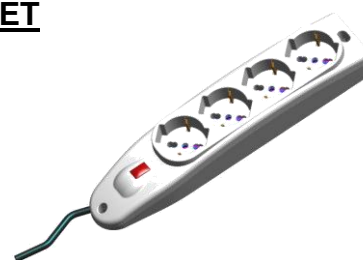
The TREND range has been expanded with the introduction of the multi-outlet socket with 2 P30 sockets + 4 P17/P11 sockets, power supply cable, switch and lighting protection  
Maximum efficiency in minimum space.  
Wall-mounting also possible



CATALOGUE NUMBER	DESCRIPTION	COLOUR	PACKAGE BULK PACK
165.20421.T	Series TREND-2xP30+4xP17/11-Lightning protection	Turquoise (transparent)	1/10

**NEW 2. SICURA SERIES – MULTI-STANDARD MULTI –OUTLET SOCKET**

The SICURA range now features a new design and new colours that make all the products in this series nicer and allow them to be surface and wall-mounted products in the desired position.  
SICURA series multi-outlet sockets are also available in the Version with luminous switch and with lighting protection .



CATALOGUE NUMBER	DESCRIPTION	PROTECTION	COLOUR	PACKAGE BULK PACK
161.40500.N	4xmulti-standard without cable		Gun-barrel grey	1/10
161.40500.R	4xmulti-standard without cable		Random	1/10
161.40501.N	4xmulti-standard with cable		Gun-barrel grey	1/10
161.40501.R	4xmulti-standard with cable		Random	1/10
161.40510.N	4xmulti-standard without cable	Luminous switch	Gun-barrel grey	1/10
161.40510.R	4xmulti-standard without cable	Luminous switch	Random	1/10
161.40511.N	4xmulti-standard with cable	Luminous switch	Gun-barrel grey	1/10
161.40511.R	4xmulti-standard with cable	Luminous switch	Random	1/10



The versions listed in the table above are also available in blister pack

CATALOGUE NUMBER	DESCRIPTION	PROTECTION	COLOUR	PACKAGE BULK PACK
999.40500.N	4xmulti-standard without cable		Gun-barrel grey	1/10
999.40500.R	4xmulti-standard without cable		Random	1/10
999.40501.N	4xmulti-standard with cable		Gun-barrel grey	1/10
999.40501.R	4xmulti-standard with cable		Random	1/10
999.40510.N	4xmulti-standard without cable	Luminous switch	Gun-barrel grey	1/10
999.40510.R	4xmulti-standard without cable	Luminous switch	Random	1/10
999.40511.N	4xmulti-standard with cable	Luminous switch	Gun-barrel grey	1/10
999.40511.R	4xmulti-standard with cable	Luminous switch	Random	1/10

**OUT OF PRODUCTION**

**3. SICURA SERIES – MULTI-OUTLET SOCKET 4 MULTI-STANDARD (Old design)**

As a result of the restyling of the SICURA series multi-outlet sockets (see previous item), the catalogue numbers of the old series are now discontinued



CATALOGUE NUMBER	DESCRIPTION	PROTECTION	COLOUR	PACKAGE BULK PACK
161.244	4xmulti-standard without cable		White	1/10
161.244/N	4xmulti-standard without cable		Black	1/10
161.244/C	4xmulti-standard with cable		White	1/10
161.244/C-N	4xmulti-standard with cable		Black	1/10
161.245	4xmulti-standard without cable	Luminous switch	White	1/10
161.245/N	4xmulti-standard without cable	Luminous switch	Black	1/10
161.245/C	4xmulti-standard with cable	Luminous switch	White	1/10
161.245/C-N	4xmulti-standard with cable	Luminous switch	Black	1/10



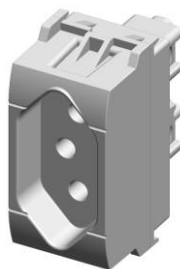
Versions in Blister pack

CATALOGUE NUMBER	DESCRIPTION	PROTECTION	COLOUR	PACKAGE BULK PACK
999.10244	4xmulti-standard without cable		White	1/10
999.10244/N	4xmulti-standard without cable		Black	1/10
999.10244/C	4xmulti-standard with cable		White	1/10
999.10244/C-N	4xmulti-standard with cable		Black	1/10
999.10245	4xmulti-standard without cable	Luminous switch	White	1/10
999.10245/N	4xmulti-standard without cable	Luminous switch	Black	1/10
999.10245/C	4xmulti-standard with cable	Luminous switch	White	1/10
999.10245/C-N	4xmulti-standard with cable	Luminous switch	Black	1/10

**NEW** 4. EVOLUTION SERIES - SOCKET 2P+T 10A BRAZILIAN STANDARD

The Evolution modular range has been expanded with the introduction of the socket **2P+T 10A 250V – Brazilian standard**

Available in Anthracite, White and Industrial Grey RAL 7035, it perfectly fits in the UNIBOX, PROTECTA, OMNIPLUS and DOMOPLUS series enclosures.



CATALOGUE NUMBER	DESCRIPTION	COLOUR	PACKAGE BULK PACK
101.6421	Brazilian Socket 2P+T 10A-250V	ANTHRACITE	12/480
101.6421.B	Brazilian Socket 2P+T 10A-250V	WHITE	12/480
101.6421.G	Brazilian Socket 2P+T 10A-250V	GREY	12/480



**NEW** 5. EVOLUTION SERIES- SOCKET RJ 45 CAT 6

The Evolution modular range has been expanded to include a new socket:

**RJ 45 CAT.6 8/8 UTP (NOT SHIELDED)**

**RJ 45 CAT.6 8/8 FTP (SHIELDED)**

The insert perfectly fits in the UNIBOX, PROTECTA, OMNIAPLUS, and DOMOPLUS series enclosures

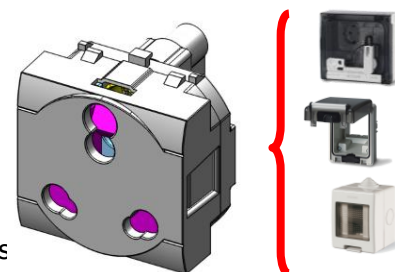


CATALOGUE NUMBER	DESCRIPTION	COLOUR	PACKAGE BULK PACK
101.6481.60	RJ 45 CAT.6 8/8 UTP (NOT SHIELDED)	ANTHRACITE	6/240
101.6481.60B	RJ 45 CAT.6 8/8 UTP (NOT SHIELDED)	WHITE	6/240
101.6481.60G	RJ 45 CAT.6 8/8 UTP (NOT SHIELDED)	GREY	6/240
101.6481.61	RJ 45 CAT.6 8/8 UTP (SHIELDED)	ANTHRACITE	6/240
101.6481.61B	RJ 45 CAT.6 8/8 UTP (SHIELDED)	WHITE	6/240
101.6481.61G	RJ 45 CAT.6 8/8 UTP (SHIELDED)	GREY	6/240

**NEW** 6. EVOLUTION SERIES – SOCKET INDIAN STANDARD

The Evolution range has been expanded to include the new Socket **2P+T 6-16A Indian standard** for the relevant market.

In addition to being supplied individually, the socket also comes already assembled inside Unibox, Domoplus and Omniaplus series enclosures

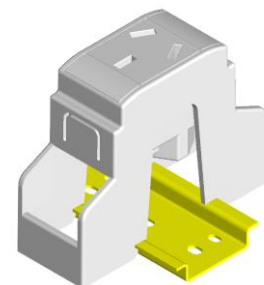


CATALOGUE NUMBER	DESCRIPTION	PROTECTION	COLOUR	PACKAGE BULK PACK
101.6429.B	Indian socket insert		White	6/240
101.6429.G	Indian socket insert		GREY	6/240
136.5122-429	Unibox series 2 mod. With Indian socket		GREY	1/32
136.5123-429	Unibox series 3 mod. With Indian socket	Unipolar switch	GREY	1/24
570.6429	Domoplus series With Indian socket			1/12
409.0429				1/6
409.1429	Omniaplus series	FUSE		1/6
409.2429	With Indian socket	MT		1/6
409.3429		MT/DIFF		1/6



**NEW** 7. EVOLUTION SERIES – INSERTS ON DIN SUPPORT

The Evolution modular range has been expanded: inserts are now available pre-assembled on the relevant DIN rail support, to be used along with the current EVOLUTION as accessories for panels.



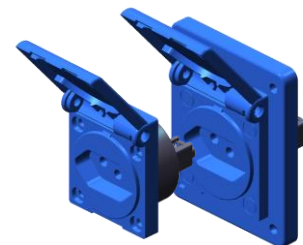
CATALOGUE NUMBER	DESCRIPTION
101.6403.GD	Bivalent Italian 10/16A
101.6405.GD	Multi-standard Italian 16A
101.6411.GD	French 16A
101.6407.GD	German 16A
101.6413.GD	English 13A
101.6424.GD	Argentinean 10A
101.6428.GD	South African 16A
101.6417.GD	Switzerland 10A
101.6481.50GD	Socket RJ45 cat.5
101.6541.2GD	Signal lamp red gem

**NEW** 8. DOMO SERIES – SOCKET 2P+T 10A BRAZILIAN STANDARD

SCAME's range of DOMO Series domestic sockets has been expanded to include the new version **2P+T 10A Brazilian standard**.

The socket comes in the flush-mounting version or with a wall-mounting box.

The catalogue numbers are:

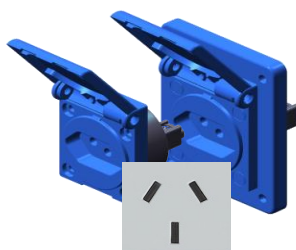


CATALOGUE NUMBER	DESCRIPTION	FLANGE	PACKAGE BULK PACK
570.2092	Brazilian Socket 2P+T 10A-250V flush-mounting	50x60	10/100
570.4092	Brazilian Socket 2P+T 10A-250V flush-mounting	70x87	10/100
570.4192	Brazilian Socket 2P+T 10A-250V in wall-mounting box PG input	70x87	9/90
570.M4192	Brazilian Socket 2P+T 10A-250V in wall-mounting box metric input	70x87	9/90



**NEW** 9. DOMO SERIES – SOCKET 2P+T 10A ARGENTINEAN STANDARD

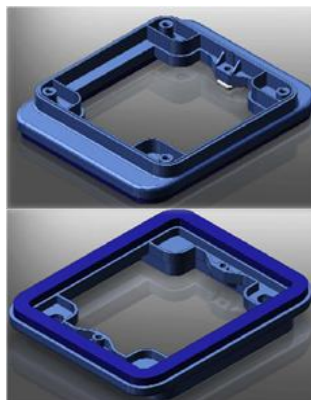
In the Domo Series range, Scame has introduced the new version **2P+T 10 A Argentinean Standard**. The socket is available in both the wall-mounting and flush-mounting version.



CATALOGUE NUMBER	DESCRIPTION	FLANGE	PACKAGE BULK PACK
<b>570.2093</b>	Argentinean Socket 2P+T 10A-250V flush-mounting	50x60	10/100
<b>570.4093</b>	Argentinean Socket 2P+T 10A-250V flush-mounting	70x87	10/100
<b>570.4193</b>	Argentinean Socket 2P+T 10A-250V in wall-mounting box PG input	70x87	9/90
<b>570.M4193</b>	Argentinean Socket 2P+T 10A-250V in wall-mounting box metric input	70x87	9/90

**NEW** 10. PROTECTA SERIES - ACCESSORY FOR FLUSH-MOUNTING BOX

Thanks to the new adapter for flush-mounting boxes, now the Protecta range, M95 size, can be installed in a 3-module box normally used in civil installations. IP55 guaranteed .



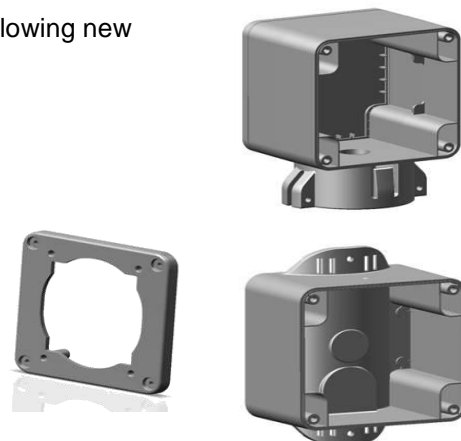
CATALOGUE NUMBER	DESCRIPTION	PACKAGE BULK PACK
<b>137.125</b>	ADAPTER X M95 IN DOMESTIC 3-MODULE FLUSH-MOUNTING BOX	1/12



**NEW** 11. PROTECTA SERIES – ACCESSORY FOR POLE MOUNTING

To complete the Protecta Series range, Scame has introduced the following new accessories for pole installation:

- M95 box for double-face pole head mounting
- M95 box for pole head mounting
- lid



CATALOGUE NUMBER	DESCRIPTION	PACKAGE BULK PACK
137.131	Pole head mounting for M95 box M95	1/12
137.141	Pole bracket mounting for M95 box	1/12
137.151	Lid for M95 box	1/12

**NEW** 12. PROTECTA SERIES – UNIPOLAR DOUBLE PUSHBUTTON

The Protecta range now includes the new unipolar double pushbutton 10Amp 250V with LED, in the flush-mounting and wall-mounting version.

Thanks to this product, you can control two different loads, thus making the most of the available space. The frame can be backlit with the addition of two LEDs (not included) in order to light up the pushbuttons at night.



CATALOGUE NUMBER	DESCRIPTION	PACKAGE BULK PACK
137.3321	10A 250V double unipolar pushbutton, M95 – FLUSH MOUNTING	1/12
137.5321	10A 250V double unipolar pushbutton, M95 – WALL	1/12



**NEW** 13. PROTECTA SERIES – DOUBLE SWITCH SOCKET BRITISH STANDARD WITH RESIDUAL CURRENT DETECTION

The Protecta range with IP66 protection has been expanded to include a new double socket:



In addition to having switches and LEDs for each individual socket, this double socket 13A 250V intended for the British Standard market is also fitted with a dedicated residual current detection, with a test pushbutton and a reset button on the front.

Available in the flush-mounting and wall-mounting version

CATALOGUE NUMBER	DESCRIPTION	PACKAGE BULK PACK
137.4043	13A 250V Double Switch socket, DP Switch, RCD Protected, with neon – FLUSH-MOUNTING	1/12
137.6043	13A 250V Double Switch socket, DP Switch, RCD Protected, with neon – WALL	1/12

**NEW** 14. FLAT SERIES – FLUSH MOUNTING CONSUMER UNIT 48 MODULES

The range of FLAT Series flush mounting consumer units has been expanded with the addition of the 48+8 modules DIN version, arranged on 4 rows with 12+2 modules.

Featuring the same characteristics of the other versions already in the catalogue, it includes accessories for flush-mounting or in plasterboard walls and 2 terminal blocks.



CATALOGUE NUMBER	DESCRIPTION	CHARACTERISTICS	PACKAGE BULK PACK
677.4048.2	Flush wall-mounting consumer unit 48+8 DIN	2 rows, 2 terminal blocs	1





## **15. LUX SERIES – CHANGEOVER TO NEW SUPPLIER**

Please note that the changeover from supplier VLM to ARDITI is now complete.

In order to make the changeover less traumatic, all catalogue numbers, with the exception of a few low-turnover products, remain the same, simply replacing the VLM product with a similar ARDITI product.

Although they are similar, the new products are obviously not identical to the previous ones, so there is likely to be some overlapping, at least in the beginning.

In case this is a problem, please contact us immediately so that we can find a solution as quickly as possible.



## **NEW 16. LIBERA SERIES – NEW CATALOGUE**

The LIBERA Series has been recently expanded considerably.

For all news, versions, technical characteristics of the available products, please refer to the new specific catalogue for EV connection and recharging systems ZP00833-I-1.

