



TO ALL OUR CUSTOMERS

NEW 1. **ISOLATORS- EX SERIES- SWITCH-DISCONNECTOR IN ENCLOSURE FOR ZONE 21 and 22**

The ATEX Directive has been effective throughout the European Union since 1 July 2003, replacing the various existing national and European legislations regarding explosive atmospheres; after that date it has been possible to market only those products conforming to the directive and supplied with the ATEX CE markings and EC declaration of conformity. It applies to all the electrical and mechanical equipment intended for use in explosion hazard areas, ranking among the directives that allow free trade of the goods and define the essential safety requirements (ESR) of the equipment which it covers. In particular, the directive defines the product categories and the characteristics the products must satisfy in order to be installed in explosion hazard areas. It also describes the procedures that must be followed in order to obtain conformity.

People usually think of these atmospheres as gas, clouds or vapours, but there are various industries where conductive or non-conductive dust mixed with air in the right proportion can become explosive and even more dangerous than gas.

In this regard there are different levels of protection, and for this reason SCAME has certified the switch-disconnector of the ISOLATORS-EX series for zone 21 and 22. This appliance with ATEX certificate number **TÜV IT 10 ATEX 042** is intended only for places where an explosive atmosphere in the form of combustible dust in the air is likely to be present occasionally during normal operation.



The ISOLATORS Ex Series switch-disconnectors in enclosures are intended for use in Zone 21 and 22, in compliance with the standards of the ATEX Directive 94/9/EC:

- EN 61241-0: 2006 (Equipment – General requirements – Combustible Dust)
- EN 61241-1: 2004 (Electrical apparatus for use in the presence of combustible dust. Protection by enclosures “tD”)



With the following type of marking:

- II 2D - Ex tD A21 IP66 T80°C Ta-25 to +40°C
- II 2D - Ex tD A21 IP66 T90°C Ta-25 to +60°C

The ISOLATORS-EX Series switch-disconnectors in enclosures are produced, in the 2, 3 and 4-pole versions, in the following sizes with the following characteristics for GENERAL or EMERGENCY use:

TECHNICAL DATA							
Control device			Rated current				
			590.XGE200X 590.XEM200X	590.XGE320X 590.XEM320X	590.XGE400X 590.XEM400X		
SCAME switch – disconnecter in enclosure Fam. 590		Rated current		20A	32A	40A	
		Isolation voltage (UI)		690V	690V	690V	
		Duty rated current based on the category	AC23A	415V	20A	32A	35A
				690V	16A	25A	25A
			AC3	400V	16A	28.5A	28.5A
				690V	12A	20A	20A
Rated frequency		50/60Hz	50/60Hz	50/60Hz			

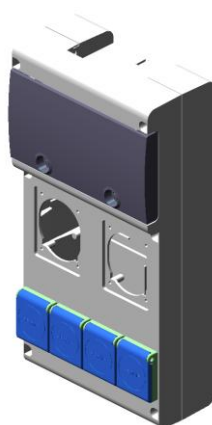
The catalogue numbers of the new products are provided in the table below.

POLES	CABLE ENTRY	DIMENSIONS	GENERAL USE	EMERGENCY CONTROL	PKG /BULK
2			590.XGE2002	590.XEM2002	
20A	2xM25+1xM20	115x190x128	590.XGE2003	590.XEM2003	1/12
			590.XGE2004	590.XEM2004	
2			590.XGE3202	590.XEM3202	
32A	2xM32+1xM20	115x190x128	590.XGE3203	590.XEM3203	1/12
			590.XGE3204	590.XEM3204	
2			590.XGE4002	590.XEM4002	
40A	2xM32+1xM20	115x190x128	590.XGE4003	590.XEM4003	1/12
			590.XGE4004	590.XEM4004	



NEW 2. BLOCK4 SERIES PANELS FOR 6 OUTLETS (2+4)

A new range of Block4 Series panels has been introduced consisting of a new version which allows the installation of 6 outlets, two with a 70x87 flange and four with a 50x60 flange.



CATALOGUE NUMBER	DESCRIPTION	PACKAGE BULK PACK
632.4530-000	BLOCK4 EMPTY PANEL holes for 6 outlets (2+4)	1

The following CEI 17-13/1 (AS) certified wired versions are also available:

TYPE OF SOCKET	GENERAL	CATALOGUE NUMBER
Block4 IP44 1x2P+E 16A 220V 1x3P+E 16A 380V 4x2P+E 16A P30 220V	1xDIFF 4x25A 1xMT 4x16A Flying plug 3P+N+E 16A	630.4036-1200
1x3P+N+E 16A 380V 1x3P+N+E 32A 380V 2x2P+E 16A bivalent 220V 4x2P+E 16A P30 220V	1xDIFF 4x40A 1xMT 4x32A 1xMT 4x16A 2x 1P+N 16A terminal board	632.4036-1201

For versions other than those indicated, please contact the SCAME offices for a study and estimate of the desired solution.



NEW 3. **NEW BLOCK 5 SERIES PANELS**

The family of Block Series panels has been expanded with the introduction of the new Block 5 panel.



Unlike the smaller versions, the new panel is distinguished for its following characteristics:

- Larger DIN switchboard in order to contain up to 14 DIN modules
- Dimensions 271x414x110mm
- Possibility to install 5 outlets (industrial standard)
- Possibility to install 7 outlets (4 industrial standard + 3 residential standard outlets)

The catalogue numbers of the empty enclosures are provided in the table below.

CATALOGUE NUMBER	DESCRIPTION	PACKAGE BULK PACK
632.5510-000	BLOCK5- blank panel	1
632.5500-000	BLOCK5- standard panel (5 industrial outlets)	1
632.5520-000	BLOCK5- 7-outlet mixed panel (4 industrial + 3 residential outlets)	1

The following wired versions have also been coded for the Block5 Series:

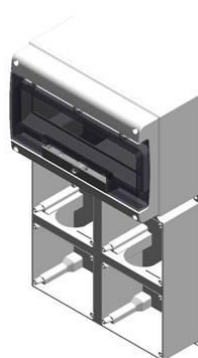
	TYPE OF SOCKET	GENERAL	CATALOGUE NUMBER
Block5 IP66 5 sockets	4x2P+E 16A 220V 1x3P+N+E 16A 380V	1xDIFF 4x25A 1xMT 4x16A Flying plug 3P+N+E 16A	630.5506-1204
	3x2P+E 16A 220V 1x3P+E 32A 380V 1x3P+N+E 32A 380V	1xDIFF 4x40A 1xMT 4x32A 3x 1P+N 16A terminal board	632.4036-1201



TYPE OF SOCKET	GENERAL	CATALOGUE NUMBER
Block5 IP44 7 sockets	2x2P+E 16A 220V 2x3P+N+E 16A 380V 3x2P+E 16A bivalent 220V	630.55026-1202
	1x2P+E 16A 220V 1x3P+E 16A 380V 1x3P+E 32A 380V 1x3P+N+E 32A 380V 3x2P+E 16A P30 220V	
	1xDIFF 4x25A 1xMT 4x16A Flying plug 3P+N+E 16A	
	1xDIFF 4x40A 1xMT 4x32A 1xMT 3x16A 2x 1P+N 16A terminal board	632.5026-1203

NEW 4. OMNIA SYSTEM – 4-SOCKET CONTAINER WITH SWITCHBOARD

The range of wall-mounted containers of the Omnia System has been completed with the new enclosure for 4 Omnia Series sockets with 14-module Din switchboard.



CATALOGUE NUMBER	DESCRIPTION	PACKAGE BULK PACK
572.0315	OMNIA System - 14 DIN switchboard + 4 OMNIA Series outlets	1

5. SPARE WINDOWS FOR GOMMA SERIES PANELS

The spare part kits of the 10 and 12 DIN windows for the Gomma Series panels have been coded, consisting of the following:

- Transparent facing
- Fixing rod
- Spring
- Facing clamping screw



CATALOGUE NUMBER	DESCRIPTION	PACKAGE BULK PACK
692.4002-10	Rubber panels – 10 DIN WINDOW KIT	1/10
692.4002-12	Rubber panels – 12 DIN WINDOW KIT	1/10



**OUT OF
PRODUCTION**

6. MBOX SERIES EMPTY PANELS WITHOUT DOOR

The Mbox3 and Mbox5 empty panels without door are now out of production.

N.B: The Mbox3 version with cut out for a 63A outlet remains available in the catalogue since it is available only without a door.

CATALOGUE NUMBER	DESCRIPTION	REPLACED BY VERSION WITH DOOR
657.0037-000	Mbox3 empty x6 OMNIA w/o door	657.0039-000
657.0937-000	Mbox3 empty x6 OMNIA w/o door+EM ¹	657.0936-000
657.0039-000	Mbox3 empty x9 EUREKA w/o door	657.0038-000
657.0939-000	Mbox3 empty x9 EUREKA w/o door+EM ¹	657.0938-000
658.0051-000	Mbox5 empty x12 sockets w/o door	658.0050-000
658.0951-000	Mbox5 empty x12 sockets w/o door+EM ¹	658.0951-000

¹ EM= emergency push button

SCAME PARRE S.p.A.
MARKETING OFFICE