

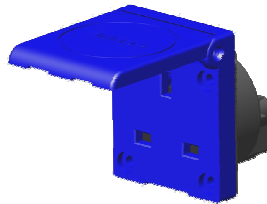


TO ALL OUR CUSTOMERS

NEW

1. NEW DOMO SERIES BS 13A DOMESTIC SOCKET

The SCAME product line of DOMO Series domestic sockets has been enhanced with the new 13A 2P+E BS (British Standard) version.

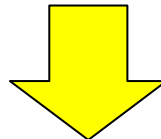
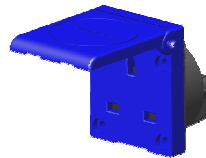


The degree of protection offered by the new socket is in line with the rest of the DOMO Series: IP54 with the plug not inserted.

The following new catalogue numbers have thus been created.

DESCRIPTION	COLOUR	PACKAGE BULK PACK	CATALOGUE NUMBER
2P+E – 13A flange 50x60mm	Blue	10/100	570.2041
2P+E – 13A flange 50x60mm	Black	10/100	570.2041N
2P+E – 13A flange 70x87mm	Blue	10/100	570.4041
2P+E – 13A flange 70x87mm	Black	10/100	570.4041N
2P+E – 13A wall flange 70x87mm – PG input	Blue	10/100	570.4141
2P+E – 13A wall flange 70x87mm – METRIC input	Blue	10/100	570.M4141

Similar to the rest of the product line, this standard is also suited for insertion in SCAME enclosures of the BLOCK, DOMINO IP66, MBOX, ROLLER and ADAPTO Series.



DOMINO IP66 Series

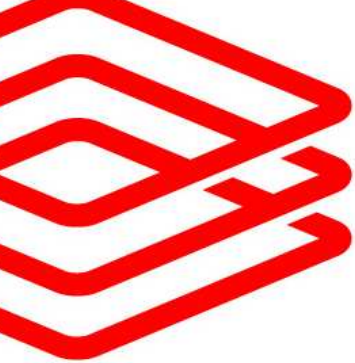
BLOCK Series

MBOX Series

ROLLER Series

ADAPTO Series

Please contact the SCAME offices for documentation, catalogue numbers, availability and prices.



NEW



2. NEW ADAPTO SERIES SIMPLE SYSTEM ADAPTERS WITH BS 13A SOCKET

The new DOMO Series BS 13A socket allows us to expand the SCAME offer of ADAPTO Series simple system adapters.

Thus the simple adapter is now produced with a protective cover for the domestic socket.



The following new catalogue numbers have therefore been created.

PLUG STANDARD	SOCKET STANDARD		PACKAGE BULK PACK	CATALOGUE NUMBER
 IEC60309 2P+E 16A - 250 VA - 6h	British Standard 2P+E 13A – 250VA		10/100	610.392

Please contact the SCAME offices for documentation, availability and prices.

NEW

3. NEW OPTIMA COMBI SERIES WALL SOCKETS WITH BS 13A SOCKET FOR INDUSTRIAL USE

The SCAME offer of wall-mounted sockets for industrial use in the OPTIMA COMBI Series (industrial socket + domestic socket) has been expanded with the addition of new versions with BS 13A 2P+E domestic sockets.



The following new catalogue numbers have therefore been created.



INDUSTRIAL SOCKET	POLES	VOLT A	COLOUR	H	PACKAGE BULK PACK	CATALOGUE NUMBER
						Without protections
16A	2P+E	200-250		6	1/10	513.1653-BN
	3P+E	380-415		6	1/10	513.1656-BN
	3P+N+E	346-415		6	1/10	513.1657-BN
						With fuse protection
32A	2P+E	200-250		6	1/10	513.3253-BF
	3P+E	380-415		6	1/10	513.3256-BF
	3P+N+E	346-415		6	1/10	513.3257-BF

Please contact the SCAME offices for documentation, availability and prices.

NEW

4. INNOVATION: DOMINO IP66 SERIES SWITCHBOARDS WITH BLANK SIDE

The SCAME product line of DOMINO IP66 Series switchboards has been extended with the introduction of new solutions having blank sides with no breakthroughs.

Apart from the cable entry, the technical characteristics of the new enclosures are identical to those of the versions currently in production.

Blank sides



The following new catalogue numbers have thus been created:



MODULE	DIN MODULES	DIMENSIONS (mm)	PACKAGE BULK PACK	CATALOGUE NUMBER
M135	2	135x76x102	1/24	672.2002P
M190	4	190x112x106	1/16	672.2004P
M190	8	190x184x106	1/10	672.2008P
M250	12	250x256x140	1/9	672.2012P
M250	16	250x328x140	1/6	672.2016P
M400	24 (12x2)	400x256x140	1/6	672.4024P
M400	32 (16x2)	400x328x140	1/4	672.4032P
M550	48 (16x3)	400x328x140	1/3	672.5048P
M700	64 (16x4)	700x328x140	1	672.7064P

Please contact the SCAME offices for documentation, availability and prices.




5. MBOX 2 - 3 - 5 SERIES PANELS (EMPTY) WITH LIGHTING DEVICE

As from 1 January 2010, all the Mbox 3 and Mbox 5 empty panels will be standard-equipped with an automatic lighting device that guarantees illumination of the socket compartment and the protection and control equipment compartment when the outdoor lighting intensity drops.

SERIES	CATALOGUE NUMBER	DESCRIPTION
	Without emergency push button	657.0035-000 5 OMNIA sockets (also 63A)
		657.0036-000 6 OMNIA sockets + door
		657.0037-000 6 OMNIA sockets
		657.0038-000 9 EUREKA sockets + door
		657.0039-000 9 EUREKA sockets
	With emergency push button	657.0935-000 5 OMNIA sockets (also 63A)
		657.0936-000 6 OMNIA sockets + door
		657.0937-000 6 OMNIA sockets
		657.0938-000 9 EUREKA sockets + door
		657.0939-000 9 EUREKA sockets
	Without emergency push button	658.0050-000 up to 12 OMNIA sockets + door
		658.0051-000 up to 12 OMNIA sockets
	With emergency push button	658.0950-000 up to 12 OMNIA sockets + door
		658.0951-000 up to 12 OMNIA sockets

While in the Mbox2 Series the two versions with and without the lighting device are still available.

SERIES	CATALOGUE NUMBER	DESCRIPTION
	Without emergency push button	656.0024-000 4 OMNIA sockets
		656.0026-000 6 EUREKA sockets
		656.0024-000L 4 OMNIA sockets + LIGHT
		656.0026-000L 6 EUREKA sockets + LIGHT
	With emergency push button	656.0924-000 4 OMNIA sockets
		656.0926-000 6 EUREKA sockets
		656.0924-000L 4 OMNIA sockets + LIGHT
		656.0926-000L 6 EUREKA sockets + LIGHT



6. "Mbox" SERIES WIRED PANELS WITH MULTI DOMESTIC STANDARD OMNIAPLUS SOCKET

The line of "standard" wired panels for building sites has been enhanced with the introduction of the following configurations with the new "OMNIAPLUS" 2P+E 16A multi domestic standard interlocked socket.

For versions other than those indicated below, please contact the SCAME offices for the study and estimate of the desired solution.



SERIES	VERSION	TYPE OF SOCKET	GENERAL	CATALOGUE NUMBER		
Mbox2	4 Omnia sockets with fuses	1x3P+E 16A 380V	1xDIFF 4x40A 1xMT 4x32A 18KW 3P+N+E Terminal board Emergency push button	656.5924-995		
		2x2P+E 16A 230V				
		1x2P+E 16A multi domestic standard				
	4 Omnia sockets without fuses	1x3P+E 16A 380V+1MT 3P 16A	1xDIFF 4x40A 1xMT 4x32A 18KW 3P+N+E Terminal board Emergency push button	656.7924-995		
		2x2P+E 16A 230V+1MT 1P 16A				
		1x2P+E 16A multi domestic standard + 1MT 1P 16A				
		1x3P+N+E 32A 380V			1xDIFF 4x40A type "A" 1xMT 4x32A 18KW 3P+N+E Terminal board Emergency push button	656.7924-1078A
		1x3P+E 16A 380V+1MT 3P 16A				
		1x2P+E 16A 230V+1MT 1P 16A				
	4 Omnia sockets without fuses	1x2P+E 16A multi domestic standard +1MT 1P 16A	1xDIFF 4x40A type "A" 1xMT 4x32A 18KW 3P+N+E Terminal board Emergency push button	656.7924-1079A		
		1x3P+N+E 32A 380V				
		2x2P+E 16A 230V+2MT 1P 16A				
4 Omnia sockets without fuses	1x2P+E 16A multi domestic standard +1MT 1P 16A	1xDIFF 4x40A type "A" 1xMT 4x32A 18KW 3P+N+E Terminal board Emergency push button	656.7924-1079A			
	1x3P+N+E 32A 380V					



SERIES	VERSION	TYPE OF SOCKET	GENERAL	CATALOGUE NUMBER	
Mbox3	6 Omnia sockets with fuses	1x3P+E 32A 380V	1xDIFF 4x63A	657.6936-991	
		2x3P+E 16A 380V	1xMT 4x63A		
		2x2P+E 16A 230V	35KW		
		1x2P+E 16A multi domestic standard	3P+N+E Terminal board Emergency push button		
	5 Omnia sockets without fuses+ output on terminal board	1x3P+N+E 32A 380V+1MT 3P 32A			657.8036-992
		1x2P+E 32A 230V+1MT 1P 32A	1xDIFF 4x63A		
		1x2P+E 16A 230V+1MT 1P 16A	1xMT 4x63A		
		2x2P+E 16A multi domestic standard +2MT 1P 16A	35KW		
		N.1 Output on terminal board 5x35mm ² protected by MT switch 4P 50A	3P+N+E Terminal board		
	6 Omnia sockets without fuses	1x3P+E 32A 380V+1MT 3P 32A	1xDIFF 4x63A	657.8936-991	
		2x3P+E 16A 230V+2MT 3P 16A	1xMT 4x63A		
		2x2P+E 16A 230V+2MT 1P 16A	35KW		
1x2P+E 16A multi domestic standard +1MT 1P 16A		3P+N+E Terminal board Emergency push button			
Mbox5	9 Omnia sockets with fuses	1x3P+N+E 63A 380V	1xMT 4x100A	658.6959-1096	
		3x3P+N+E 32A 380V	3xDIFF 4x63A		
		3x2P+E 16A 230V	1xDIFF 2x40A		
		2x2P+E 16A multi domestic standard	55KW		
	7 Omnia sockets without fuses+ 2 outputs on terminal board	1x3P+N+E 63A 380V	1xMT /DIFF	658.6959-996	
		2x3P+N+E 32A 380V	4x100A		
		3x3P+E+16A 380V	55KW		
		1x2P+E 16A 230V	3P+N+E		
		2x2P+E 16A multi domestic standard	Terminal board Emergency push button		
		N.1 Output on terminal board 3x16mm ² protected by MT switch 3P 40A			
	6 Omnia sockets without fuses	1x3P+N+E 32A 380V+1MT 3P 32A		658.8959-996	
		1x3P+N+E 16A 380V+1MT 3P 16A	1xMT /DIFF		
4x2P+E 16A 230V+4MT 1P 16A		4x100A			
1x2P+E 16A multi domestic standard +1MT 1P 16A		55KW			
N.1 Output on terminal board 3x16mm ² protected by MT switch 3P 20A		3P+N+E			
		Terminal board			
6 Omnia sockets without fuses	1x3P+N+E 32A 380V+1MT 3P 32A	1xDIFF 4x63A	658.8059-1061		
	1x3P+E 16A 380V+1 MT 3P 16A	1xMT 4x63A			
	3x2P+E 16A 230V+3 MT 1P 16A	35KW			
	2x2P+E 16A multi domestic standard + 2MT 1P 16A	3P+N+E			
		Terminal board Emergency push button			