



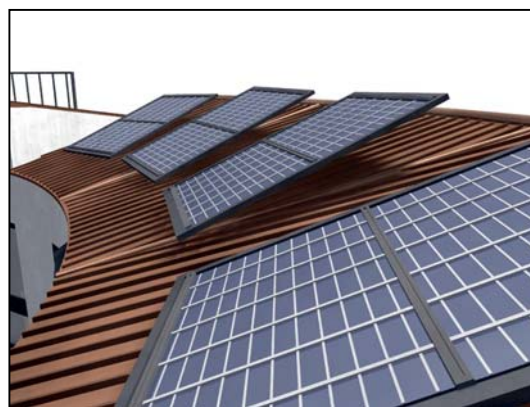
TO ALL OUR CLIENTS

NEW

1. COMMAND SERIES 16A-32A-40A SWITCH DISCONNECTORS SUITABLE ALSO FOR DC22A 10A 600V

The range of switch disconnectors 16A, 32A and 40A COMMAND series have passed the DC22A 10A 600V tests.

Their characteristics are particularly useful for installing solar pv modules where inverters are needed to convert direct current (DC) produced by the photovoltaic cells into alternate current (AC).



The codes of the products with this characteristic:

DESCRIPTION	THERMAL CURRENT Ith	PACKAGING	TYPE R (BACK PANEL MOUNTING)		TYPE B (BOX)
			PRODUCT CODE	PRODUCT CODE	
16A	2P 30A	1/6	590.YA162R	590.YA162B	
	3P 30A	1/6	590.YA163R	590.YA163B	
	4P 30A	1/6	590.YA164R	590.YA164B	
32A	2P 40A	1/6	590.YA322R	590.YA322B	
	3P 40A	1/6	590.YA323R	590.YA323B	
	4P 40A	1/6	590.YA324R	590.YA324B	
40A	2P 40A	1/6	590.YA402R	590.YA402B	
	3P 40A	1/6	590.YA403R	590.YA403B	
	4P 40A	1/6	590.YA404R	590.YA404B	

Please take note of the following available accessories:

- Surface switches 67x67 mm for traditional fitting and Ø 22mm fitting
- Extension shaft for locking the shutter
- Surface switches 70x87 mm for adapting to SCAME enclosures
- Direct operators



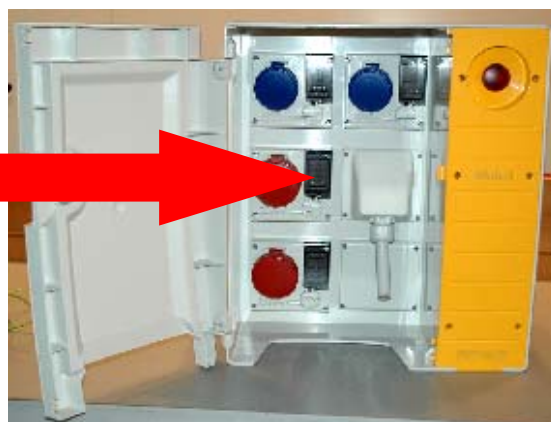


NEW 2. **ACCESSORY FOR MBOX SERIES**

Scame has enhanced the range of accessories for MBOX Series and now offers ART. 572.0323 (Omnia cover terminal block outlet, complete with screws and gasket).

It can be fitted in socket enclosures of the OMNIA series (in the configurations shown on the instructions leaflet).

The item offers the possibility to set up a terminal block output (wires/cable section MAX 16 mm²) instead of a socket outlet.



NEW 3. **PROTECTA**

With the Protecta series Scame has made a step forward compared to the Unibox series and offers a full range of British Standard switches and sockets with IP66 degree of protection.

The PROTECTA range, among other, offers disconnecting switches up to 20A and single and double current changeover switches in addition to 13 and 15A British Standard sockets fitted either with or without a switch, and are all available both for surface or flush mounting.

The safety and reliability of the product is combined with a typically sleek Italian design: polycarbonate ensures it stands up to knocks and bangs, chemical aggression and to UV rays. The incorporated shutter device acting on the socket slots guarantees safety of use while the TPE gasket makes it possible for IP66 degree of protection to be maintained even when the plug is inserted.

Functionality was considered as a main priority during the design of the PROTECTA series: the lid can be opened with one hand and the lighted frame round the buttons make the switch easy to find in the dark offsetting any potentially dangerous situations for the user.

The Protects series has already been added to the updated English version of the catalogue and is also the focus of a special issue entirely dedicated to the series.





Please feel free to contact SCAME offices to ask for material, product codes, availability and prices.

NEW

4. SERIES NAMES

Scame has added Series numbers to all its products to make it easier to look up the catalogue.

CATALOGUE	SUBJECT	ADOPTED PROPOSAL
Sec. 1.4	Lampholders and switches	LUX Series
Sec. 2.1	Emergency call points	EMERGENCY Series
Sec. 2.2	Sockets for domestic applications (570. ...)	DOMO Series
Sec. 2.4	Switch disconnectors (590.Y...)	COMMAND Series
Sec. 3.1	Night time power supply box for road scaffoldings	LV-LUX Series
	ASC cabinets with transformer	TRANSFORMER Series
	ASC cabinets on folding stand	MOBIL Series
	Motor cut-out devices	SALVAMOTORE Series
Sec. 3.2	Industrial purpose adaptors	ADAPTO Series
Sec. 4.1	Cable glands, nuts and caps	UNION Series
	Ties and accessories	TIES Series
	Fixing elements (hooks and rawplugs)	FIXO Series
	Cable sheaths – Spiral wrappers	CABLO Series
	Cable brackets	FASTY Series
	DIN rails	RAILDIN Series
Sec. 4.2	Terminals and terminal boards	CONNECTO Series
Sec. 4.3	Tube clips (plastic) – Collars and U bolts (metal)	FIXER Series
	Tube accessories for IP40 and IP65 tubes (except SMART)	TUBE Series




NEW 5. SIMPLE SYSTEM ADAPTORS ADAPTO SERIES

The SCAME offer for simple system adaptors ADAPTO Series has been extended with new versions. It is a new range of products with industrial plug comply to the standard IEC60309 and domestic socket outlet comply to several national standard.



The following new catalogue number has thus been created:

INDUSTRIAL PLUG	DOMESTIC SOCKET	PACK QUANTITY	CATALOGUE NUMBER
 IEC60309 2P+E 16A - 250 V~ - 6h	Italian (Dual use [2 sockets])	10/100	610.370
	Italian-German (Pluristandard)	10/100	610.371
	Italian (P30)	10/100	610.372
	German (UNEL)	10/100	610.373
	French	10/100	610.374
	British 13A	10/100	610.375
	British 15A	10/100	610.376
	Argentinian 10A	10/100	610.377
	Argentinian 20A	10/100	610.378

OUT OF PRODUCTION

6. BASIC

The codes of the BASIC modular flush civil series, family 102. *, are withdrawn from the catalogue but continue to be regularly produced and can be ordered as special codes.