



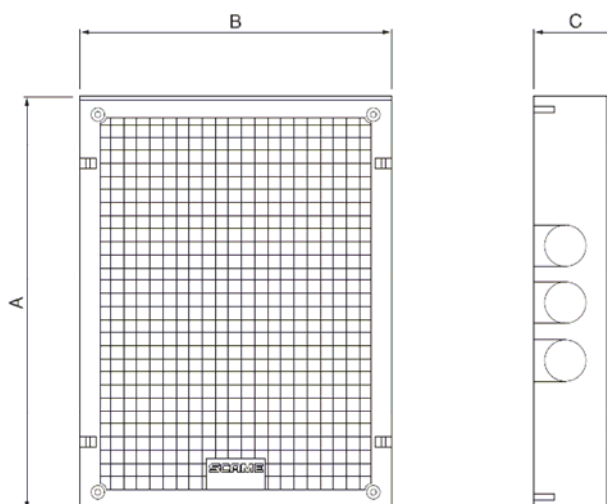
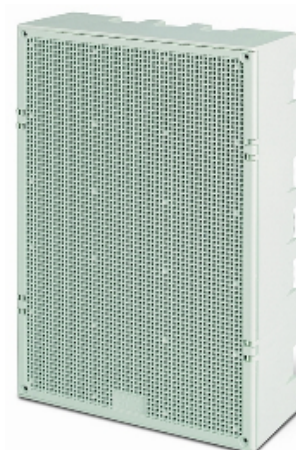
**TO ALL OUR CUSTOMERS**

**NEW** 1. **BEEBOX**

The Scame range of enclosures for electrical devices has been expanded with the introduction of a new line of products, the BEEBOX Series, enclosures for electrical devices with honeycomb cover.

These new enclosures are available in 10 different sizes from 200x150x40mm up to 400x300x120mm.

DESCRIPTION	DIMENSIONS (AxBxC) mm	PACKING QUANTITY	CATALOGUE NUMBER
Basic module	200x150x40	26	<b>639.1040</b>
	200x150x60	38	<b>639.1060</b>
	200x150x80	25	<b>639.1080</b>
Double module	200x300x40	24	<b>639.2040</b>
	200x300x60	18	<b>639.2060</b>
	200x300x80	12	<b>639.2080</b>
	200x300x120	8	<b>639.2120</b>
Quadruple module	400x300x60	8	<b>639.4060</b>
	400x300x80	6	<b>639.4080</b>
	400x300x120	4	<b>639.4120</b>



The striking characteristics of these new products are:

- Degree of protection IP41
- Total Insulation
- Glow wire 650°C
- Impact resistance IK08 at 20°C
- Temperature of use according to the reference standard: -15°C + 40°C
- Maximum working temperature: 60°C
- Box in grey-coloured, RAL 7035, impact-resistant engineering polymer which is halogen-free and flame-retardant.



**NEW**

## 2. EMERGENCY SWITCHBOARDS

New emergency switchboards have also been introduced.

### FLUSH MOUNTING VERSION – IP55

- Colour red RAL 3000
- Can be mounted in flush mounting box with centre-to-centre distance 83.5 mm
- With illuminated push button (24V incandescent or 250V fluorescent bayonet lamp -12V)
- With 1 NO contact and 1 NC contact (2A, 250V)
- Complete with glass-breaking hammer



DESCRIPTION	DIMENSIONS (mm)	PACKING QUANTITY	CATALOGUE NUMBER
With push button and hammer	100x100x50 mm	1/13	<b>676.25100</b>

NOTE: The illuminated push buttons can use the bayonet lamps with the following catalogue numbers: 101.6200 - 101.6200.11 - 101.6200.12 - 101.6200.24

### SURFACE MOUNTING VERSION – IP55

- Colour red RAL 3000
- With illuminated push button (24V incandescent or 250V fluorescent bayonet lamp -12V)
- With 1 NO contact and 1 NC contact (2A, 250V)
- Complete with glass-breaking hammer



DESCRIPTION	DIMENSIONS (mm)	PACKING QUANTITY	CATALOGUE NUMBER
With push button and hammer	100x100x50	1/14	<b>676.35100</b>

### SURFACE MOUNTING VERSION – IP65

- Colour red RAL 3000
- Equipped with flange to facilitate junctions



DESCRIPTION	DIMENSIONS (mm)	PACKING QUANTITY	CATALOGUE NUMBER
With DIN rail	205x220x140	1/6	<b>676.35201</b>
With mounting plate	205x220x140	1/6	<b>676.35205</b>



## ACCESSORIES

DESCRIPTION	DIMENSIONS (mm)	PACKING QUANTITY	CATALOGUE NUMBER
Spare cover + glass	100x100	1/10	<b>676.10101</b>
Glass-breaking hammer	-	1/10	<b>676.10102</b>
Fastening brackets	-	1/20	<b>676.10103</b>



The striking characteristics of these new products are:

- Degree of protection IP55 or IP65 depending on the version
- Colour red RAL 3000
- Total Insulation
- Glow wire 650°C
- Impact resistance IK05 at 20°C
- Temperature of use: -25 °C+60 °C
- Heat resistance: thermo-pressure with ball up to +85 °C
- Resistance to chemical agents (water, saline solutions, acids, bases and mineral oils) and weatherability
- High resistance to UV rays
- Front door with 0.75 frangible glass (degree IK05)
- Equipped with coded key lock
- Panels supplied complete with:
  - n.4 module covers per row (for the versions with DIN rail)
  - n 4 screw caps to guarantee total insulation
  - n.1 plate for certification






**NEW**

**3. 70x87 COVER PLATES WITH HOLES FOR TOP22 SERIES COMPONENTS**

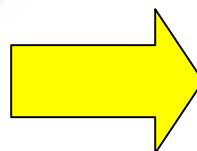
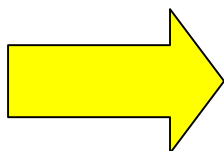
New 70x87 cover plates with holes for fastening TOP22 Series components have been introduced.

**HOLE COVER PLATE**

DESCRIPTION	COLOUR	PACKING QUANTITY	CATALOGUE NUMBER
		1/10	<b>654.0101</b>
For TOP22 Series components		1/10	<b>654.0101Y</b>
		1/10	<b>654.0102</b>



The installation of the TOP22 Series components is quick and easy.



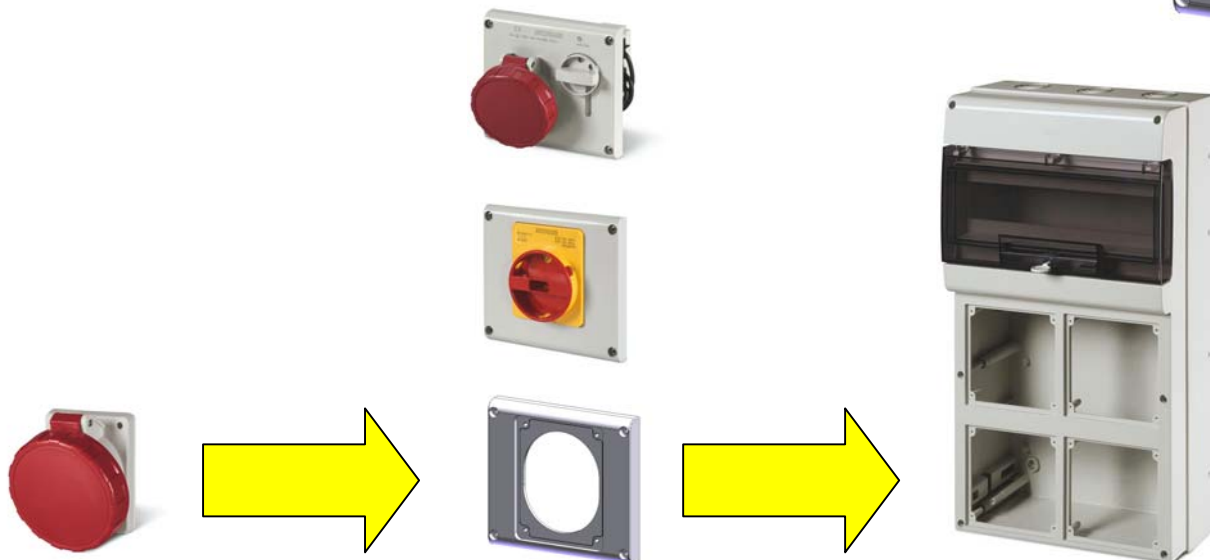
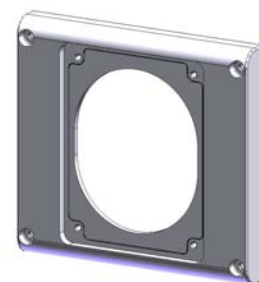


**NEW**

**4. PREDRILLED OMNIA SERIES COVER PLATES FOR 16A AND 32A SOCKETS**

New predrilled facings have been introduced which are suitable for EUREKA Series 16A (70x87mm) and 32A (84x106mm) surface/flush mounting sockets.

DESCRIPTION	DIMENSIONS (mm)	PREDRILLING	PACKING QUANTITY	CATALOGUE NUMBER
Flange 136 x 125mm	136x125x15	16A (70x87mm)	6	<b>654.0125</b>
	136x125x15	32A (84x106mm)	6	<b>654.0126</b>





**NEW**

**5. BLOCK 4 SERIES WITH YALE LOCK**

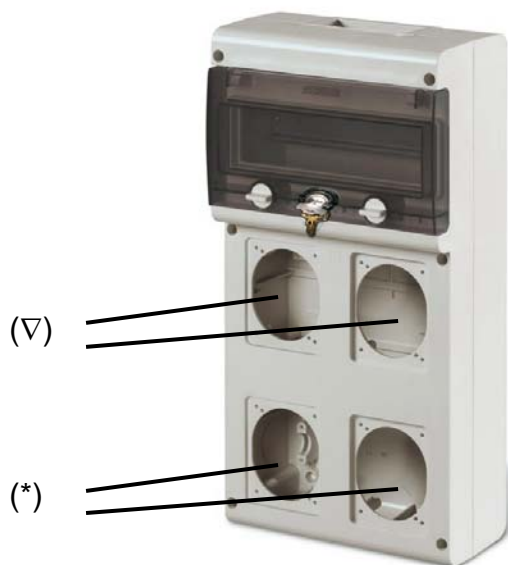
The Scame product line has been extended regarding the blank BLOCK Series. New versions have been introduced with Yale lock and standard factory-mounted earth terminal box 1x(5x10mm<sup>□</sup> + 5x16mm<sup>□</sup>).

DESCRIPTION	DIN MODULES WINDOW	SOCKET HOLES (*)	DIMENSIONS (mm)	POWER DISPERSIBLE (•)	PACKING QUANTITY	CATALOGUE NUMBER
BLOCK 4 with Yale lock	10	4	212 x 415 x 105	14W	1	<b>632.4700-000</b>
		NO	212 x 415 x 105	14W	1	<b>632.4710-000</b>

(\*) predrilling with flange 70x87 mm

(∇) can also use 32A sockets with 84x106mm flange

(•) power calculated in compliance with the standard CEI 23-49.



SCAME PARRE SPA  
MARKETING OFFICE