

TO ALL OUR CUSTOMERS

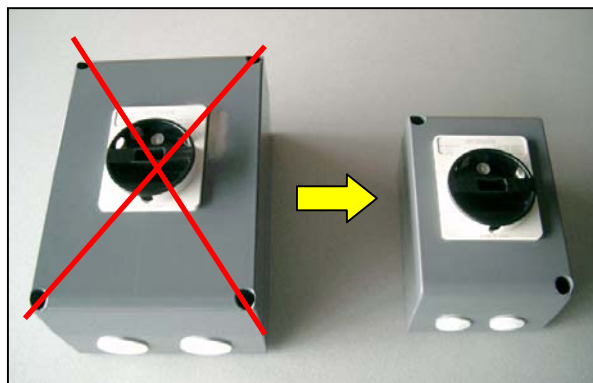
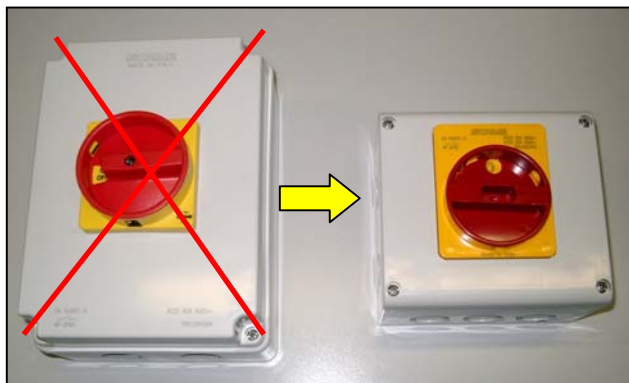
1. PRODUCT CHANGE: NEW ENCLOSURES AND DISCONNECTING SWITCHES FOR ISOLATORS 40A SERIES

ISOLATORS **40A** enclosures in thermoplastic and metal look new and have new dimensions. The enclosure has been replaced: the current model will be replaced by the enclosures used for 20A and 32A products. The disconnecting switch will be accordingly replaced by a new 40A disconnecting switch, which is suitable for installations in the new enclosure. The electric features of the disconnecting switch do not change and remain the same. The IP degree of protection of the enclosure is unchanged: IP65. Products subject to changes are as follows:

Changed Versions			Catalogue Number	
Nominal Current AC22A	Enclosure Material	Poles	Emergency Control	General Use
40A	Thermoplastic	2	590.EM4002	590.GE4002
		3	590.EM4003	590.GE4003
		4	590.EM4004	590.GE4004
	Metal	2	590.HEM4002	590.HGE4002
		3	590.HEM4003	590.HGE4003
		4	590.HEM4004	590.HGE4004



Warning: Catalogue Numbers are unchanged

The new dimensions of enclosures are 135x125x85 mm for thermoplastic products and 105x150x82 mm for metal solutions.



2. NEW ENCLOSURES FOR THERMOPLASTIC 63-80-100A ISOLATORS SERIES

Thermoplastic enclosures for ISOLATORS Series switching units 63, 80 and 100A aesthetically have been modified. The enclosure has been replaced: the current model will be replaced by a new enclosure. All internal parts are unchanged. Therefore, the electric features of the disconnecting switch are unchanged and remain the same. The IP degree of protection of the enclosure is also unchanged: IP65. Products subject to changes are as follows::

Changed Versions				Catalogue Number	
Nominal Current AC22A	Enclosure Material	Poles	Emergency Control	General Use	
63A	Thermoplastic	2	 590.EM6302	 590.GE6302	
		3	590.EM6303	590.GE6303	
		4	590.EM6304	590.GE6304	
80A	Thermoplastic	2	590.EM8002	590.GE8002	
		3	590.EM8003	590.GE8003	
		4	590.EM8004	590.GE8004	
100A	Thermoplastic	3	590.EM10003	590.GE10003	
		4	590.EM10004	590.GE10004	

Warning: Catalogue Numbers are unchanged.

Sizes for new thermoplastic enclosures are 150x210x106 mm.



3. PRODUCT CHANGE: NEW CODE OF PRODUCT – 16A to 20A ISOLATORS SERIES

ISOLATOR 20A products have a new catalogue number. The part of the cod “16” become “20”:

16 shows an incorrect nominal value for 16A, instead of the real one which is 20A.

Therefore, new catalogue numbers are defined with “20”. Codes with “16” are now cancelled even if product remains the same.

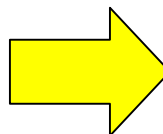
Catalogue Number	Description	New Catalogue Number:
------------------	-------------	-----------------------

RECESSED VERSION – technopolymer

590.ER1602	EMERGENCY Control	20A 2 poles	590.ER2002
590.ER1603	EMERGENCY Control	20A 3 poles	590.ER2003
590.ER1604	EMERGENCY Control	20A 4 poles	590.ER2004
590.GR1602	GENERAL Use	20A 2 poles	590.GR2002
590.GR1603	GENERAL Use	20A 3 poles	590.GR2003
590.GR1604	GENERAL Use	20A 4 poles	590.GR2004

WALL Version – technopolymer

590.EM1602	EMERGENCY Control	20A 2 poles	590.EM2002
590.EM1603	EMERGENCY Control	20A 3 poles	590.EM2003
590.EM1604	EMERGENCY Control	20A 4 poles	590.EM2004
590.GE1602	GENERAL Use	20A 2 poles	590.GE2002
590.GE1603	GENERAL Use	20A 3 poles	590.GE2003
590.GE1604	GENERAL Use	20A 4 poles	590.GE2004



WALL Version - metal

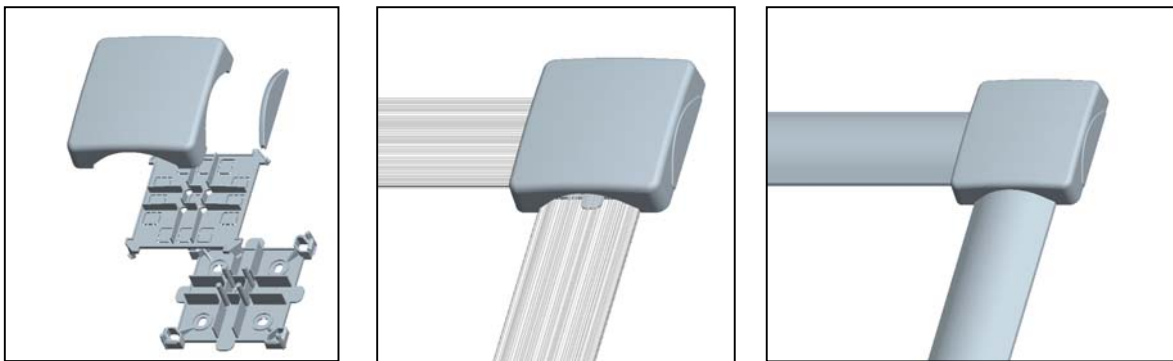
590.HEM1602	EMERGENCY Control	20A 2 poles	590.HEM2002
590.HEM1603	EMERGENCY Control	20A 3 poles	590.HEM2003
590.HEM1604	EMERGENCY Control	20A 4 poles	590.HEM2004
590.HGE1602	GENERAL Use	20A 2 poles	590.HGE2002
590.HGE1603	GENERAL Use	20A 3 poles	590.HGE2003
590.HGE1604	GENERAL Use	20A 4 poles	590.HGE2004



4. NEW "T" JOINT FOR WADO OVERFLOOR DUCTS

The offer for WADO Series over-floor duct accessories is implemented.

Such accessory will make 2, 3 or 4 way connections possible.



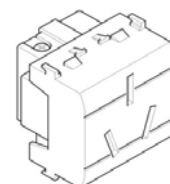
The following new products are available:

DESCRIPTION	Catalogue Number
Overfloor T-Joint – White	879.GT0007
Overfloor T-Joint - Anthracite	879.GT0007A
Overfloor T-Joint - Brown	879.GT0007M
Overfloor T-Joint - Grey	879.GT0007G

5. NEW PRODUCT, ARGENTINE STANDARD SOCKET FOR EVOLUTION SERIES

The offer for EVOLUTION Series products has been widened. A new socket is now available for Argentine standard 2P+T socket, 20A (IRAM). The new socket takes 2 modules and is perfectly modular to the whole EVOLUTION Series, enclosures of the UNIBOX Series and with ref. 570.5052 IP55 flange 70x87mm, which allows the fixing of domestic sockets with SCAME, BLOCK and DOMINO enclosures. The new product is offered in three versions of colours: anthracite, white and grey.

Description of Socket	Catalogue Number
Argentina 2P+T 20A 250V~ - anthracite	101.6426
Argentina 2P+T 20A 250V~ - white	101.6426.B
Argentina 2P+T 20A 250V~ - grey	101.6426.G



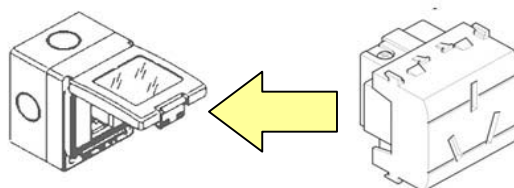
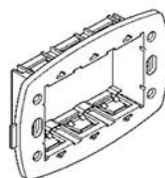
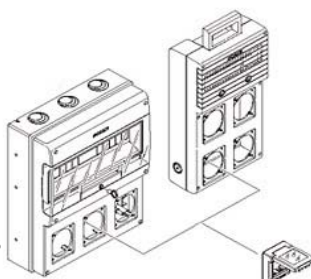
EVOLUTION Series



UNIBOX Series



BLOCK and DOMINO Series



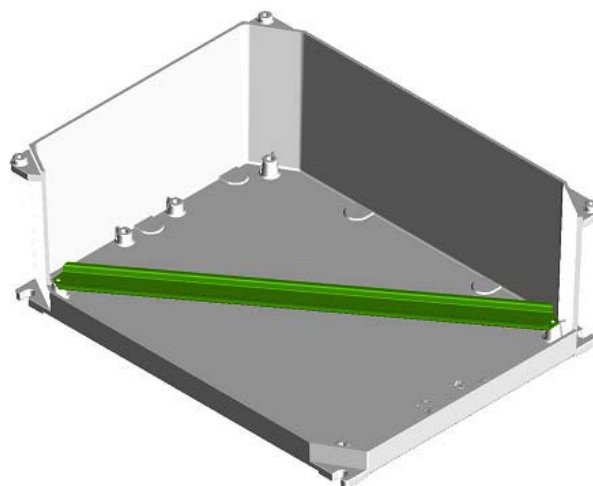
ref. 570.5052



6. NEW DIN GUIDE KIT FOR ALUBOX SERIES

Specific DIN guides are manufactured for all sizes of our derivation boxes in aluminium, belonging to the ALUBOX Series. The product is supplied separately from the connector block and consists of specifically shaped/holed DIN guides and insert and shim for the fixing of screws against the diagonal line on the base of the box bottom. The new catalogue numbers are as follows:

DESCRIPTION	Catalogue Number
DIN guide kit for box 100x100x56 mm	653.020
DIN guide kit for box 140x115x60 mm	653.021
DIN guide kit for box 166x142x64 mm	653.022
DIN guide kit for box 192x168x80 mm	653.023
DIN guide kit for box 253x217x93 mm	653.024
DIN guide kit for box 314x264x122 mm	653.025
DIN guide kit for box 410x315x150 mm	653.027



SCAME PARRE SPA
EXPORT DEPT.