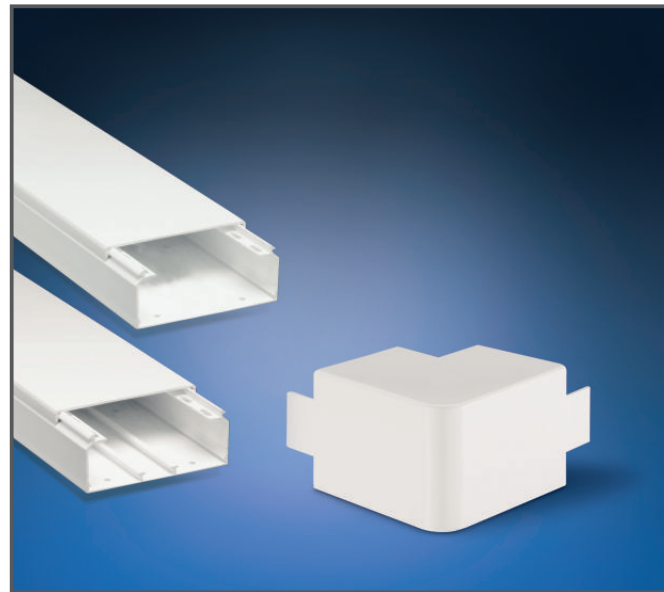




# WADO Series - Cable trunking

## > CABLE AND SET HOUSING TRUNKING



## > VERSIONS

	Cable trunking
	Cable and set housing trunking

## > REFERENCE STANDARD

**CEI 23-32**  
Trunking insulating plastic material and related accessories for cable trunking and carrying electrical appliances, for ceiling and wall-mounting.

## > QUALITY MARKS



## > TECHNICAL CHARACTERISTICS

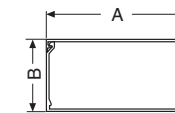
Protection degree:	<b>IP40</b>
Operating temperature according to the reference standard:	<b>-25°C+60°C</b>
Max. operating temperature:	<b>60°C</b>
Glow Wire test:	<b>960°C</b>
IK degree at 20°C:	<b>IK08</b>
Material:	<b>Engineering plastic</b>
Colour:	<b>White RAL 9016</b>
Impact resistance according to the reference standard:	<b>1J to -5°C</b>

## > BEHAVIOUR WITH CHEMICAL AND ATMOSPHERIC AGENTS

Saline solution	Acids		Bases		Solvents				Mineral oil	UV rays
	Concentrated	Diluted	Concentrated	Diluted	Hexane	Benzol	Acetone	Alcohol		
Resistant	Limited Resistance	Resistant	Limited Resistance	Resistant	Not Resistant	Not Resistant	Limited Resistance	Resistant	Resistant	Resistant

## > TRUNKING SECTIONS AND NUMBER OF CABLES TO INSTALL

Type of trunking A	Type of trunking B	Trunking geometry separating cm <sup>2</sup>	SEC.	SEC.	SEC.	SEC.	SEC.	SEC.	SEC.
			1,5mm <sup>2</sup>	2,5mm <sup>2</sup>	4mm <sup>2</sup>	6mm <sup>2</sup>	10mm <sup>2</sup>	16mm <sup>2</sup>	25mm <sup>2</sup>
40	40	14,2	74	51	39	23	16	12	7
60	40	20,4	105	74	56	33	23	17	11
60	60	32	166	115	88	51	35	26	17
80	60	42,4	220	153	117	68	47	35	22
100	60	53,6	279	194	148	86	59	44	28
150	60	79,5	413	287	220	128	88	65	42
100	80	72,8	379	263	201	117	80	60	38
150	80	108,8	566	393	301	175	120	89	57
200	80	149,7	758	526	403	234	161	120	77



## > WORKING GEOMETRIC SECTION OF TRUNKING IN cm<sup>2</sup> WITH INSTALLED SWITCH HOLDERS

Type of trunking A	Trunking section B	Holder centre distance cm <sup>2</sup>	Holder centre distance 83,5cm <sup>2</sup>	Jack holder 60cm <sup>2</sup>	Socket, holder cm <sup>2</sup>	cm <sup>2</sup>
80	60	42,6	8	7	0,3	-
100	60	53,6	19	18	11	-
120	60	62,9	28	27	21	-
150	60	79,5	45	44	37	-
100	80	72,8	38	37	31	-
150	80	108,8	74	73	66	27
200	80	145,7	111	110	103	64

> CABLE AND SET HOUSING TRUNKING

### CABLE TRUNKING

DIMENSION	A	B
40x40	40	40
60x40	60	40
60x60	60	60
80x60	80	60
100x80	100	80

### CABLE AND SET HOUSING TRUNKING

DIMENSION	A	B	C
100x60	100	60	72
150x60	150	60	122
150x80	150	80	122
200x80	200	80	172

### GT - FLAT TEES

Type of trunking	A	B
40	40/60/80/100	64
60	60/80/100/120/150/200	64
80	100/120/150/200	84

### SA - FLAT CONNECTOR BLOCK

Type of trunking	A	B	H
40	121	121	68
60	221	221	85

### PA02 - SWITCH HOLDER 83,5mm

### AP - FLAT ANGLE

DIMENSION	A	B	C	D	E
40x40	63	44	44	63	40
60x40	83	64	64	83	40
60x60	83	64	64	83	60
80x60	103	84	84	103	60
100x60	123	104	104	123	60
150x60	225	150	150	225	60
100x80	123	104	104	123	80
150x80	225	150	150	225	80
200x80	275	200	200	275	80

### AI - INTERNAL ANGLE

DIMENSION	A	B	C	D
40x40	60	60	40	44
40x60	60	60	40	64
60x60	80	80	60	64
80x60	80	80	60	84
100x60	80	80	60	104
150x60	195	195	60	150
100x80	100	100	80	104
150x80	220	220	80	150
200x80	220	220	80	200

### PB02 - SWITCH HOLDER 60mm

### PB04 - JACK HOLDER

### PC02 - IEC SOCKET HOLDER

### AE - EXTERNAL ANGLE

DIMENSION	A	B	C	D
40x40	44	75	60	40
40x60	64	95	80	40
60x60	64	95	80	60
80x60	84	95	80	60
100x60	104	115	100	60
150x60	150	200	200	60
100x80	104	115	100	80
150x80	150	220	220	80
200x80	200	220	220	80

### TT - END CAP

DIMENSION	A	B	C
40x40	44	42	10
40x60	64	42	10
60x60	64	62	10
80x60	84	62	10
100x60	104	62	10
150x60	154	62	10
100x80	104	82	10
150x80	154	82	10
200x80	200	80	2

### SC - MODULAR SWITCHES UNIT

Type of trunking	A	B	C	D	
SC01	50/100	120	120	71	67
SC02	150/200	220	220	175	87

### PD - 6 DIN MODULAR SWITCH PLATE

	A	B	C	D	H
PD150	150	120	105	45	10
PD200	150	200	105	45	10

### MP - WALL SHELF

	Trunking base	A
MP01	122	82
MP02	202	184

(Dimensions in mm)

(Dimensions in mm)