

## IEC309 Series

Industrial plugs and sockets  
Rated operating voltage <50V

### No. Reference SERIES

230 – 235

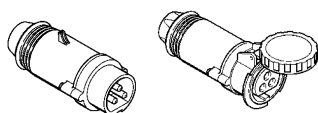
330 – 335

430 – 435

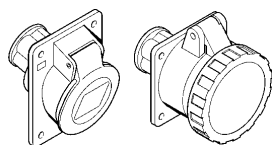
530 – 535



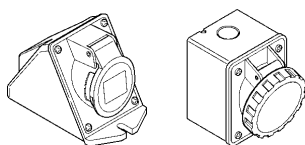
### Versioni



Plugs and connectors



Panel mounting socket outlets



Surface mounting socket outlets

### Reference standards

Standards: **EN 60309-1 (1999)**  
**EN 60309-2 (1999)**

### Marking

### Quality marks



### TECHNICAL characteristics:

Rated current: **16A-32A**

Rated voltage: **<50V~**

Frequency: **c.c. - 50 ÷ 500Hz**

Insulating voltage: **500/690V~**

Protection degree: **IP44-IP67**

Operating temperature according to the reference standard: **-25°C+40°C**

Max operating temperature: **60°C**

Glow Wire test: **650°C/850°C**

Material: **Engineering plastic**

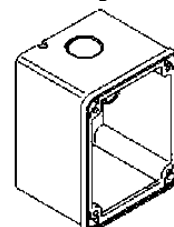
IK degree at 20°C: **IK08/IK10**

Cable inlets: **Cable sleeve IP44**  
**Cable gland IP67**

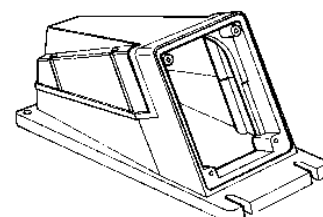
### Accessories

#### Empty surface mounting boxes

Straight



Angled



## IEC309 Series

Industrial plugs and sockets  
Rated operating voltage <50V



### No. Reference SERIES

230 – 235  
330 – 335  
430 – 435  
530 – 535

### CABLING operations

#### Cabling capacity of the terminals (mm<sup>2</sup>)

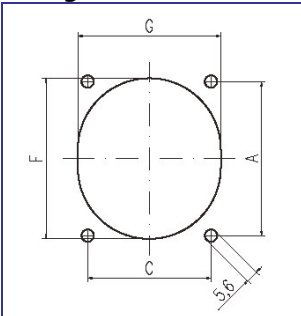
Rated voltage	Rated current (A)	Plugs, connectors and appliance inlets		Socket outlets	
		Min	Max	Min	Max
< 50V	16A	4	10	4	10
	32A	4	10	4	10

#### Max. cable size accepted by the cable clamp:

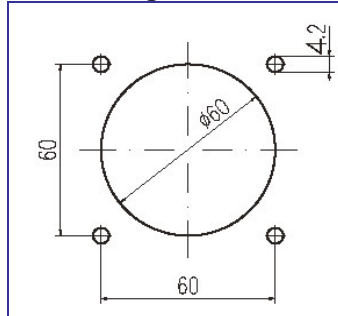
Rated current (A)	Outside Ø mm	
	Min	Max
16A	8	15
32A	11,5	21

### Dimensions

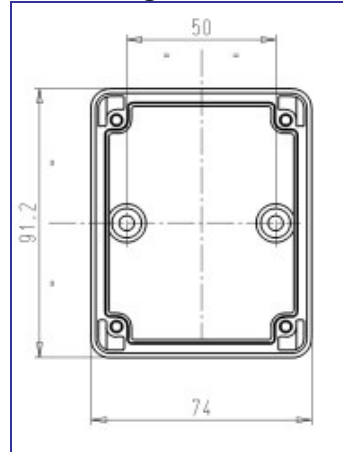
#### Flange 70x87 – 84x106



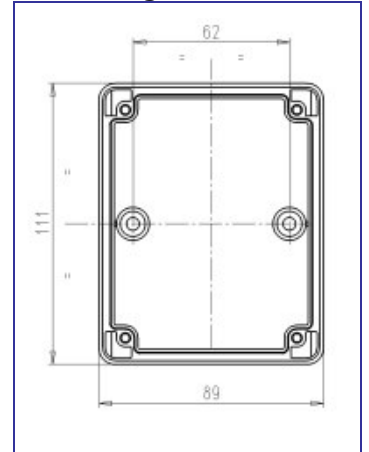
#### Flange 75x75



#### Straight box 16A



#### Straight box 32A



		C	D
16A	2P+E	56	70
	3P+E	56	70
	3P+N+E	56	70
32A	2P+E	68	84
	3P+E	68	84
	3P+N+E	68	84

### Behaviour with CHEMICAL and ATMOSPHERIC AGENTS

Saline solution	Acids		Bases		Solvents				Mineral oil	UV rays
	Concentrated	Diluted	Concentrated	Diluted	Hexane	Benzol	Acetone	Alcohol		
RESISTANT	LIMITED RESISTANCE	RESISTANT	LIMITED RESISTANCE	RESISTANT	RESISTANT	LIMITED RESISTANCE	NOT RESISTANT	RESISTANT	RESISTANT	RESISTANT