

Installation accessories

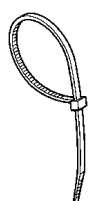
Cable ties

No. Reference SERIES

839



Versions



CABLE TIES
For indoor wiring



CABLE TIES
For outdoor wiring

Reference standards

Standards:

Marking

Marking: **CE Marking**



Quality marks

TECHNICAL characteristics:

Operating temperature: **-40°C+85°C for indoor wiring**
-40°C+80°C for outdoor wiring
 Installation temperature: **-10°C+60°C for indoor wiring**
-20°C+60°C for outdoor wiring

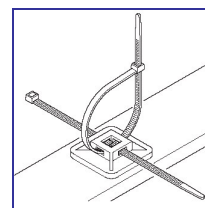
Glow Wire test: **650°C**

Material: **Engineering plastic**

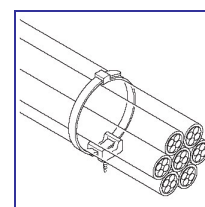
Colour: **Black**

Natural

IK degree at 20°C: **IK08/IK10**



**ADHESIVE
SUPPORT**



**VIBRATION
RESISTANT
SUPPORT**

Behaviour with CHEMICAL and ATMOSPHERIC AGENTS

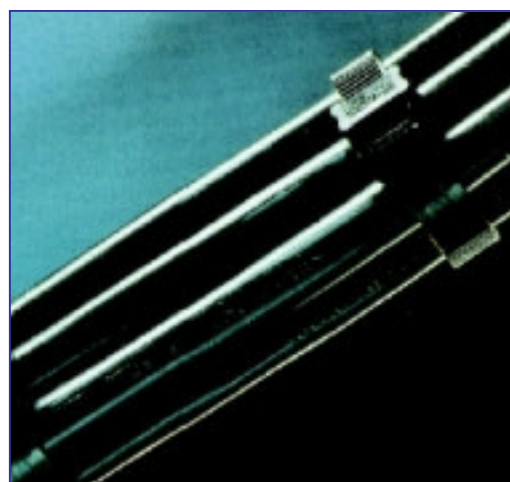
Saline solution	Acids		Bases		Solvents				Mineral oil	UV rays
	Concentrated	Diluted	Concentrated	Diluted	Hexane	Benzol	Acetone	Alcohol		
RESISTANT	NOT RESISTANT	NOT RESISTANT	LIMITED RESISTANCE	RESISTANT	RESISTANT	RESISTANT	RESISTANT	RESISTANT	RESISTANT	RESISTANT

Installation accessories

Cable ties

No. Reference Series

839



Dimensions

Cable ties for indoor wiring

DIMENSIONS (mm)	GRIP CAPACITY MIN ÷ MAX Ø mm	TENSILE STRENGTH Kg
2,4x75	1,5÷15	6
2,5x95	1,5÷18	8
2,5x135	1,5÷30	8
2,5x160	1,5÷40	8
2,5x200	1,5÷50	8
3,6x140	1,5÷35	13
3,6x200	1,5÷50	13
3,6x290	1,5÷80	13
3,6x365	1,5÷100	13
4,8x180	1,5÷45	22
4,8x200	1,5÷45	22
4,8x250	1,5÷60	22
4,8x290	1,5÷75	22
4,8x360	1,5÷100	22
4,8x430	1,5÷110	22
7,6x180	4,5÷45	55
7,6x300	4,5÷80	55
7,6x365	4,5÷100	55
9x780	4,5÷230	55

Cable ties for outdoor wiring in PA12

DIMENSIONS (mm)	GRIP CAPACITY MIN ÷ MAX Ø mm	TENSILE STRENGTH Kg
6x115	4÷25	25
6x175	10÷45	28
9x120	4÷22	48
9x180	10÷42	48
9x265	26÷60	50
9x360	30÷93	50