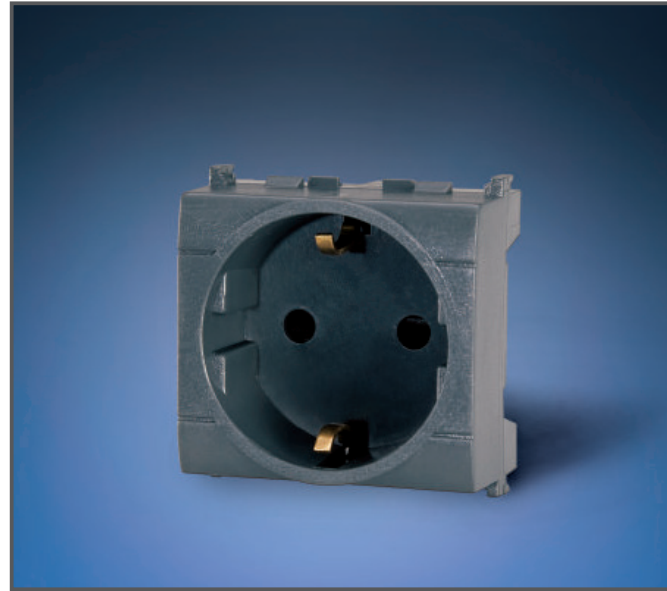


## > DOMESTIC SOCKET-OUTLETS



## > VERSIONS

	Socket-outlet for Italy - P11 - P30 - P17 - Pluristandard - P11/17
	Socket-outlet for European countries - French socket-outlets - German socket-outlets - British socket-outlets
	Socket-outlet for other countries - Argentinian socket-outlets - Euroamerican socket-outlets

## > QUALITY MARKS



## > TECHNICAL CHARACTERISTICS

Rated current:	<b>10A - 13A - 15A - 16A - 20A</b>
Rated voltage:	<b>250V~</b>
Frequency:	<b>50Hz</b>
Insulating voltage:	<b>250V~</b>
Protection degree:	<b>IP20D</b>
Operating temperature according to the reference standard:	<b>-155°C+35°C</b>
Max operating temperature:	<b>60°C</b>
Glow Wire test:	<b>650°C/750°C</b>
Material:	<b>Engineering plastic</b>
Cabling capacity of the terminal:	<b>10A: 1mm<sup>2</sup>÷2,5mm<sup>2</sup></b> <b>13A: 1,5mm<sup>2</sup>÷4mm<sup>2</sup></b> <b>15A: 1,5mm<sup>2</sup>÷4mm<sup>2</sup></b> <b>16A: 1mm<sup>2</sup>÷4mm<sup>2</sup></b> <b>20A: 1mm<sup>2</sup>÷6mm<sup>2</sup></b>
Glow Wire test:	<b>650°C/850°C</b>
Halogen free:	<b>Yes</b>
Colour:	<b>Anthracite pantone 432</b> <b>White RAL 9010</b> <b>Grey RAL 7035</b> <b>Red</b>

## > BEHAVIOUR WITH CHEMICAL AND ATMOSPHERIC AGENTS

Saline solution	Acids		Bases		Solvents				Mineral oil	UV rays
	Concentrated	Diluted	Concentrated	Diluted	Hexane	Benzol	Acetone	Alcohol		
Resistant	Limited Resistance	Not Resistant	Limited Resistance	Limited Resistance	Not Resistant	Not Resistant	Not Resistant	Limited Resistance	Limited Resistance	Resistant

## > APPLICATION EXAMPLES



## > AVAILABLE STANDARDS

<b>ITALIAN STANDARD</b> <b>P10</b>  Shuttered socket 2P+E 10A 250V~ CEI 23-50	<b>ITALIAN STANDARD</b> <b>P11</b>  Shuttered socket 2P+E 16A 250V~ CEI 23-50	<b>ITALIAN STANDARD</b> <b>P17/11</b>  Shuttered socket 2P+E 16A 250V~ Dual use CEI 23-50	<b>ITALIAN STANDARD</b> <b>P30</b>  Shuttered socket 2P+E 16A 250V~ CEI 23-50	<b>PLURISTANDARD</b>  Shuttered socket 2P+E 16A 250V~	<b>GERMAN STANDARD</b>  Unshuttered socket 2P+E 16A 250V~ DIN VDE 0620-1
<b>FRENCH STANDARD</b>  Shuttered socket NCF 61-314	<b>BRITISH STANDARD</b>  Shuttered socket 2P+E 13A 250V~ BS 1363	<b>BRITISH STANDARD</b>  Shuttered socket 2P+E 15A 250V~ BS 546	<b>ARGENTINIAN STANDARD</b>  Unshuttered socket 2P+E 10A 250V~ IRAM 2071	<b>ARGENTINIAN STANDARD</b>  Unshuttered socket 2P+E 20A 250V~ IRAM 2071	<b>EURO-AMERICAN STANDARD</b>  Shuttered socket 2P 15A 250V~