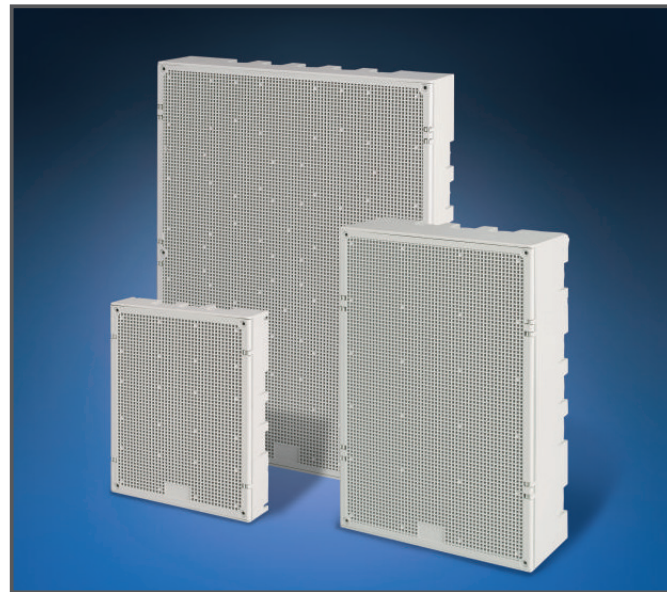





> EMPTY DISTRIBUTION ASSEMBLIES



> VERSIONS

	1 module
	2 module
	4 module


> REFERENCE STANDARDS

EN 60670-1
Boxes and enclosures for electrical accessories for household and similar fixed electrical installations.
Part 1: general requirements.

> QUALITY MARKS



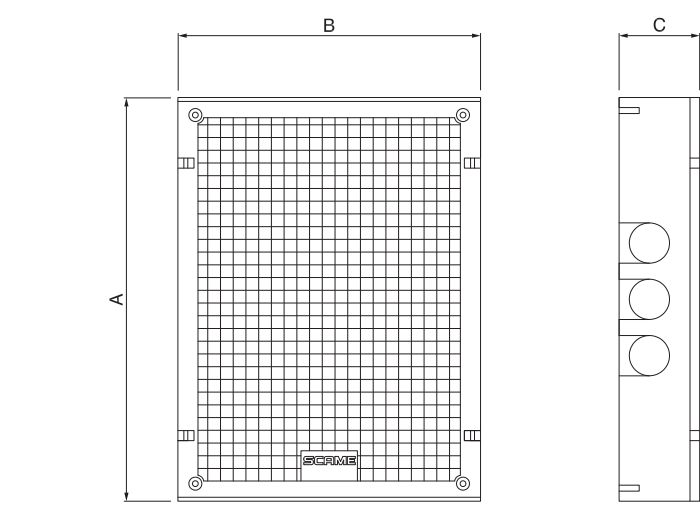
> TECHNICAL CHARACTERISTICS

Protection degree:	IP41
Operating temperature according to the reference standard:	-15°C+35°C
Max. operating temperature	60°C
Glow Wire test:	650°C
Material:	Engineering plastic
IK degree at 20°C:	IK08
Total insulation 	Yes
Halogen free:	Yes
Colour:	Grey RAL 7035

> BEHAVIOUR WITH CHEMICAL AND ATMOSPHERIC AGENTS

Saline solution	Acids		Bases		Solvents				Mineral oil	UV rays
	Concentrated	Diluted	Concentrated	Diluted	Hexane	Benzol	Acetone	Alcohol		
Resistant	Limited Resistance	Resistant	Resistant	Resistant	Resistant	Not Resistant	Not Resistant	Limited Resistance	Limited Resistance	Resistant

> DIMENSIONS



	A	B	C
639.1040	200	150	40
639.1060	200	150	60
639.1080	200	150	80
639.2040	200	300	40
639.2060	200	300	60
639.2080	200	300	80
639.2120	200	300	120
639.4060	400	300	60
639.4080	400	300	80
639.4120	400	300	120

(Dimension in mm)

> APPLICATION EXAMPLES

