

# OPTIMA-BASE-TOP-COMBI Series

## INDUSTRIAL SURFACE MOUNTING SOCKET OUTLETS



## REFERENCE STANDARDS

**EN 60309-1**  
Plugs, socket-outlets and couplers for industrial purposes.  
Part 1: general requirements.

**EN 60309-2**  
Plugs, socket-outlets and couplers for industrial purposes.  
Part 2: dimensional interchangeability requirements for pin and contact-tube accessories.

## QUALITY MARKS



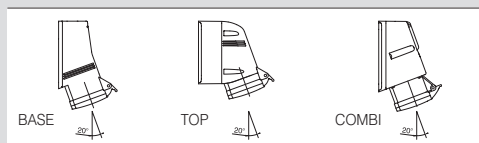
## TECHNICAL CHARACTERISTICS

Rated current:	<b>16A-32A-63A-125A</b>
Rated voltage:	<b>100+690V~</b>
Frequency:	<b>d.c - 50+500Hz</b>
Insulating voltage:	<b>500/690V~</b>
Protection degree:	<b>Base: IP44/IP54 Top: IP44 - IP66/IP67/IP69 COMBI: IP44/IP54 closed cover</b>
Operating ambient temperature according to the reference standard:	<b>-25°C +40°C</b>
Max operating ambient temperature:	<b>60°C</b>
Glow Wire test:	<b>650°C (housing) 850°C (contact carrier)</b>
Material:	<b>Engineering plastic</b>
IK degree at 20°C:	<b>IK08</b>
Cable inlets:	<b>Cable sleeve IP44/IP54 Cable gland IP66/IP67/IP69</b>
Halogen free:	<b>Yes</b>
Terminals:	<b>Screw (16A-32A) Spring (32A) Mantle (16A-125A)</b>
Safe-in device:	<b>16A</b>
Fuses:	<b>Max 10A - 5x20mm</b>
(COMBI version)	<b>H: high power cutoff (1500A) T: delayed action</b>

## VERSIONS

	BASE version
	TOP version (with or without switch)
	COMBI version (with or without switch)

## SURFACE MOUNTING INSTALLATION AXIS



## BEHAVIOUR WITH CHEMICAL AND ATMOSPHERIC AGENTS

Saline solution	Acids		Bases		Solvents				Mineral oil	UV rays
	Concentrated	Diluted	Concentrated	Diluted	Hexane	Benzol	Acetone	Alcohol		
Resistant	Limited Resistance	Resistant	Resistant	Resistant	Not Resistant	Not Resistant	Not Resistant	Limited Resistance	Limited Resistance	Limited Resistance



Fastening to exterior wall.



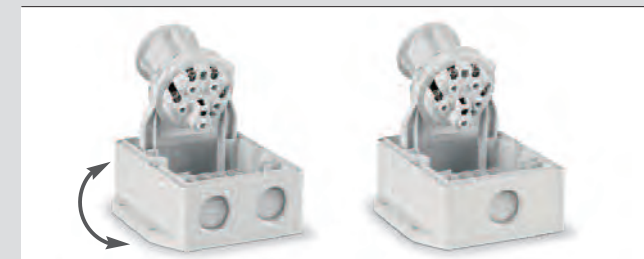
TOP version: threaded knockout hole inlets, version IP66/IP67/IP69, for quick fastening of the cable entry device. IP44 versions supplied with cable gland.



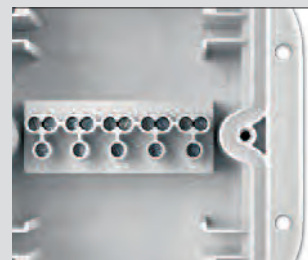
16-32A Surface mounting sockets with spring terminals.



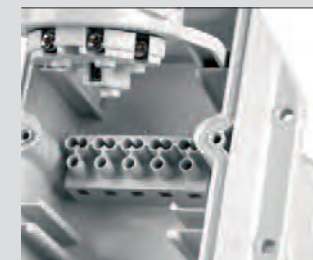
TOP version: ability to create entry-exit.



TOP version: reversible base and removable socket for easy wiring.



TOP IP66/IP67/IP69 version: integrated, one-piece gasket, fastening screws outside the gasket.



TOP version: entry-exit terminal board accessory.



TOP version: versions with SAFE-IN (16A) safety device available.



COMBI version: combined versions, industrial and household socket.



BASE version: simplified wiring. Socket fixed to the base, open terminals orientated in the same direction and easily accessible.