

## 136x125mm



### Switched socket outlets with interlock

OMNIA Series

### Switch-disconnectors - IP65

ISOLATORS Series

Poles	A	Volt	Colour	With fuse holder				A	Poles	General use	Emergency Switching
				IP44	IP66/IP67	IP44	IP66/IP67				
2P	16	24		400.2416	405.2416	-	-	2	1/12	590.GR2002	590.ER2002
	16	200-250		400.1683	405.1683	401.1683	406.1683	3	1/12	590.GR2003	590.ER2003
	32	200-250		400.3283	405.3283	401.3283	406.3283	4	1/12	590.GR2004	590.ER2004
2P+E	63	200-250		405.6383	-	-	-	2	1/12	590.GR3202	590.ER3202
	16	380-415		400.1686	405.1686	401.1686	406.1686	3	1/12	590.GR3203	590.ER3203
	32	380-415		400.3286	405.3286	401.3286	406.3286	4	1/12	590.GR3204	590.ER3204
3P+E	63	380-415		405.6386	-	-	-	2	1/12	590.GR3202	590.ER3202
	16	346-415		400.1687	405.1687	401.1687	406.1687	3	1/12	590.GR3203	590.ER3203
	32	346-415		400.3287	405.3287	401.3287	406.3287	4	1/12	590.GR3204	590.ER3204
3P+N+E	63	346-415		405.6387	-	-	-	2	1/12	590.GR3202	590.ER3202

### Sockets for domestic applications

OMNIPLUS Series

Description	Standard	Flange	Without protection			
			Fuse (*)	MCB	RCBO	
2P+E	GERMAN	1/6	409.0407	409.1407	409.2407	409.3407
	FRENCH	1/6	409.0411	409.1411	409.2411	409.3411
2P+E 13A - 250V-	BRITISH BS1363	1/6	409.0413	409.1413	409.2413	409.3413
2P+E 6A 16A - 250V-	INDIAN	1/6	409.0429	409.1429	409.2429	409.3429
2P+E 10A - 250V-	NEW ZEALAND	1/6	409.0427	409.1427	409.2427	409.3427
2P+E 16A - 250V-	SOUTH AFRICAN	1/6	409.0428	409.1428	409.2428	409.3428

(\*) 10A - 250V-

## 70x87mm



### Flush mounting sockets outlets

OPTIMA Series

## 84x106mm



### Sockets for domestic applications

## 50x60mm



DOMO/DOMOPLUS Series

Poles	A	Volt	Colour	Description		Standard	Flange 50x60 mm	Flange 70x87 mm
				IP44/IP54	IP66/IP67/IP69			
2P	16	24		430.1615	435.1615	GERMAN	570.2062	570.4062 570.6407
	16	200-250		413.1663(*)	418.1663(*)	FRENCH	570.2091	570.4091 570.6411
2P+E	32	200-250		413.3263(*)	418.3263(*)	BRITISH BS1363	570.2041	570.4041 570.6413
	16	380-415		413.1666(*)	418.1666(*)	BRITISH BS546	-	570.6414
3P+E	32	380-415		413.3266(*)	418.3266(*)	NEW ZEALAND	-	570.6427
	16	346-415		413.1667(*)	418.1667(*)	SOUTH AFRICAN	-	570.6428
3P+N+E	32	346-415		413.3267(*)	418.3267(*)	-	-	-

(\*) Versions also available with spring terminals; just add "F" at the end of the catalogue number. Example: 413.1663F.

### Flanges

ACCESSOIRES

Description	Flange 70x87 mm
For enclosure DOMINO Series, BLOCK Series, MBOX Series	25 654.0100
Flange 75x75 on 84x106mm	5 654.0108
Cabinet fixing for bases 50x60mm on ENERBOX Series lateral knockouts	10 570.2001

### Front operators

COMMAND Series

Description	Switch disconnectors	Knob	Front plate	Flange 70x87 mm
16A, 32A, 40A	Red	Yellow	1/10	590.YM70R1
Suitable for R switch disconnectors	Black	Yellow	1/10	590.YM70R2
63A, 80A, 100A	Red	Yellow	1/10	590.YM70R6
	Black	Yellow	1/10	590.YM70R7

## 106x240mm



Module 106 (compact)

## 136x390mm



Module 136 (large)

### Switched socket outlets with interlock

ADVANCE2 Series

OMNIA Series

Poles	A	Volt	Colour	With fuse holder		With DIN rail (6 modules)	
				IP44	IP66/IP67	IP44	IP66/IP67
2P	16	24		565.2416	565.2416/S	565.2516	564.2516/S
	16	200-250		560.1683	561.1683	562.1683	563.1683
	32	200-250		560.3283	561.3283	562.3283	563.3283
2P+T	63	200-250		561.6383	-	563.6383	-
	125	200-250		561.6383	-	563.6383	-
	16	380-415		560.1686	561.1686	562.1686	563.1686
3P+T	32	380-415		560.3286	561.3286	562.3286	563.3286
	63	380-415		561.6386	-	563.6386	-
	125	380-415		561.6386	-	563.6386	-
3P+N+T	16	346-415		560.1687	561.1687	562.1687	563.1687
	32	346-415		560.3287	561.3287	562.3287	563.3287
	63	346-415		561.6387	-	563.6387	-
125	346-415		561.6387	-	563.6387	-	



### ADVANCE2 System

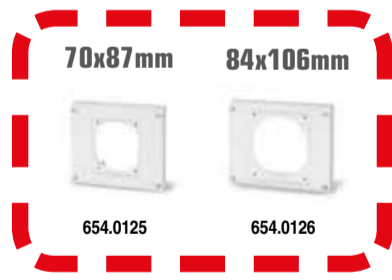
### MBOX Series

Module	Poles	A	Volt	Flange 70x87								
				IP44	IP66/IP67	IP44	IP66/IP67	IP44	IP66/IP67			
Module 106 (compact)	12	576.4300	12	576.4303	12	576.4301	6	576.4304	6	576.4302	6	576.4305
Module 136 (large)	6	576.4340	12	576.4323	12	576.4321	6	576.4324	6	576.4322	6	576.4325

658.0050-000  
658.0051-000



### MBOX Series



### DOMINO Series



### OMNIA System



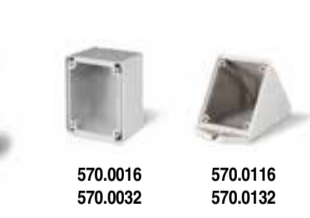
### MBOX Series



### ENERBOX Series



### DOMO Series



### DOMINO Series



### BLOCK Series



### Industrial plugs and sockets

OPTIMA Series

Poles	A	Volt	Colour	Base version						Top version		Top switch version	
				IP44/IP54	IP66/IP67/IP69	IP44/IP54	IP66/IP67/IP69	IP44/IP54	IP66/IP67/IP69	IP44/IP54	IP66/IP67/IP69		
2P	16	24		230.1600	235.1600	330.1605	335.1605	-	-	-	-	-	-
	16	200-250		213.1633(*)	218.1633(*)	313.1643(*)	318.1643(*)	513.1653	513.1653(*)	518.1653(*)	513.1653TS	518.1653TS	
	32	200-250		213.3233(*)	218.3233(*)	313.3243(*)	318.3243(*)	513.3253	513.3253(*)	518.3253(*)	513.3253TS	518.3253TS	
2P+E	63	200-250		213.6333	218.6333	313.6343	318.6343	-	513.6353(*)	518.6353(*)	-	-	
	125	200-250		213.6333	218.6333	313.6343	318.6343	-	513.6353(*)	518.6353(*)	-	-	
	16	380-415		213.1636(*)	218.1636(*)	313.1646(*)	318.1646(*)	513.1656	513.1656(*)	518.1656(*)	513.1656TS	518.1656TS	
3P+E	32	380-415		213.3236(*)	218.3236(*)	313.3246(*)	318.3246(*)	513.3256	513.3256(*)	518.3256(*)	513.3256TS	518.3256TS	
	63	380-415		213.6336	218.6336	313.6346	318.6346	-	513.6356(*)	518.6356(*)	-	-	
	125	380-415		213.6336	218.6336	313.6346	318.6346	-	513.6356(*)	518.6356(*)	-	-	
3P+N+E	16	346-415		213.1637(*)	218.1637(*)	313.1647(*)	318.1647(*)	513.1657	513.1657(*)	518.1657(*)	513.1657TS	518.1657TS	
	32	346-415		213.3237(*)	218.3237(*)	313.3247(*)	318.3247(*)	513.3257	513.3257(*)	518.3257(*)	513.3257TS	518.3257TS	
	63	346-415		213.6337	218.6337	313.6347	318.6347	-	513.6357(*)	518.6357(*)	-	-	
125	346-415		213.6337	218.6337	313.6347	318.6347	-	513.6357(*)	518.6357(*)	-	-		

(\*) Versions also available with spring terminals; just add "F" at the end of the catalogue number. Example: 213.1633F.

(\*) Versions also available with insulation perforating terminals; just add "IP" at the end of the catalogue number. Example: 213.1633IP.

(A) Mantle terminals

ScameOnLine  
www.scame.com  
export@scame.com



SCAME PARRE S.p.A.  
VIA COSTA ERTA, 15  
24020 PARRE (BG) ITALY  
TEL. +39 035 705000  
FAX +39 035 703122

