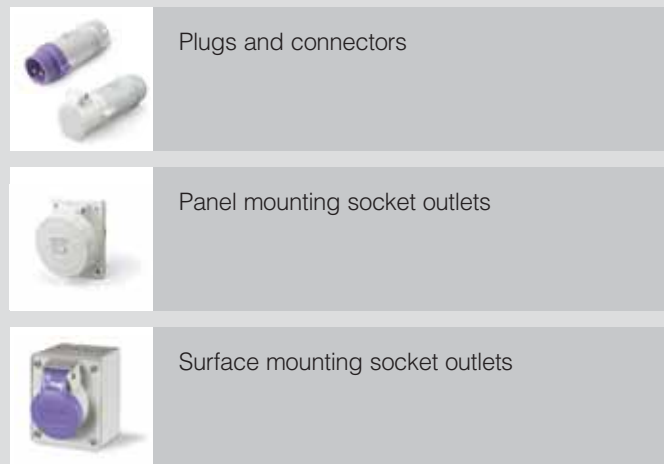


## > INDUSTRIAL PLUGS AND SOCKETS



## > VERSIONS



## > REFERENCE STANDARDS

**EN 60309-1**  
Plugs, socket-outlets and couplers for industrial purposes  
*Part 1: general requirements*

**EN 60309-2**  
Plugs, socket-outlets and couplers for industrial purposes  
*Part 2: dimensional interchangeability requirements for pin and contact-tube accessories.*

## > QUALITY MARKS



## > TECHNICAL CHARACTERISTICS

Rated current:	<b>16A - 32A</b>
Rated voltage:	<b>&lt;50V~</b>
Frequency:	<b>c.c. - 50÷500Hz</b>
Insulating voltage:	<b>500/690V~</b>
Protection degree:	<b>IP44 - IP66/IP67</b>
Operating temperature according to the reference standard:	<b>-25°C+40°C</b>
Max. operating temperature:	<b>60°C</b>
Glow Wire test:	<b>650°C/850°C</b>
Material:	<b>Engineering plastic</b>
IK degree at 20°C:	<b>IK08 - IK10</b>
Cable inlets:	<b>Cable sleeve IP44 Cable gland IP66/IP67</b>

## > BEHAVIOUR WITH CHEMICAL AND ATMOSPHERIC AGENTS

Saline solution	Acids		Bases		Solvents				Mineral oil	UV rays
	Concentrated	Diluted	Concentrated	Diluted	Hexane	Benzol	Acetone	Alcohol		
Resistant	Limited Resistance	Resistant	Limited Resistance	Resistant	Resistant	Limited Resistance	Not Resistant	Resistant	Resistant	Resistant

## > WIRING AND INSTALLATION

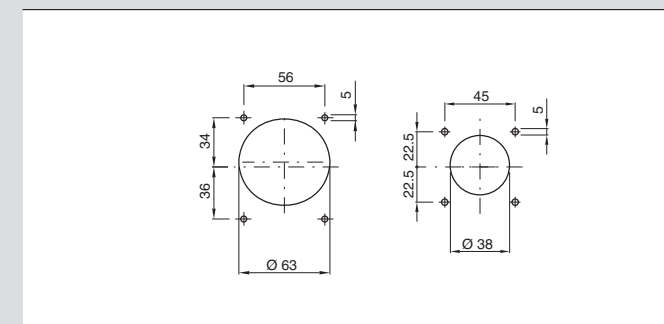
### Wiring capacity of the terminals (mm²)

Rated voltage	Rated current (A)	Plugs, connectors and appliance inlets		Socket outlets	
		Min	Max	Min	Max
<50V	16A	4	10	4	10
	32A	4	10	4	10

### Max. cable size accepted by the cable clamp:

Rated current (A)	Outside Ø mm	
	Min	Max
16A	8	15
32A	11,5	21

## > FIXING



(Dimensions in mm)

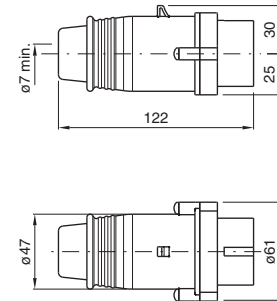
SCAME sockets for voltage < 50V can be surface mounted or panel mounted on panel boards, or where the surface is set up with the following perforation.

## > APPLICATION EXAMPLES

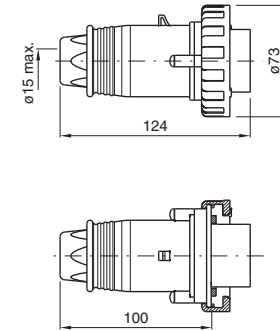


> DIMENSIONS

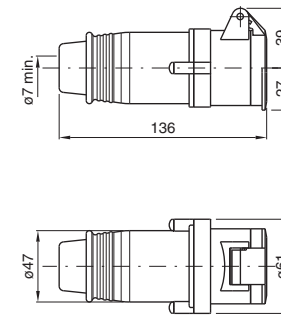
MOBILE PLUGS - IP44



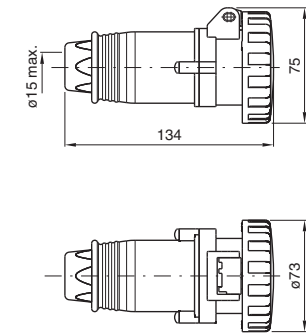
MOBILE PLUGS - IP66/IP67



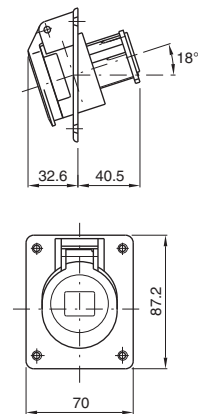
CONNECTORS - IP44



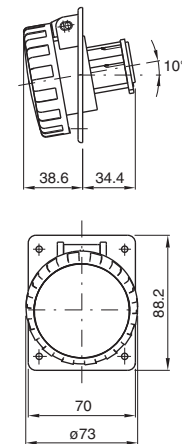
CONNECTORS - IP66/IP67



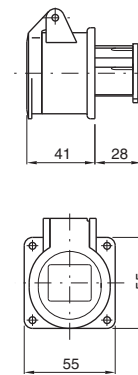
PANEL MOUNTING SOCKET OUTLETS - ANGLED STANDARD FLANGE - IP44



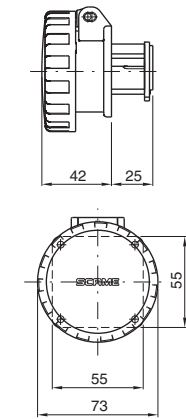
PANEL MOUNTING SOCKET OUTLETS - ANGLED STANDARD FLANGE - IP66/IP67



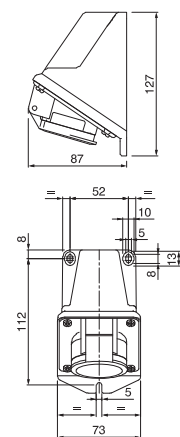
PANEL MOUNTING SOCKET OUTLETS - STRAIGHT REDUCED FLANGE - IP44



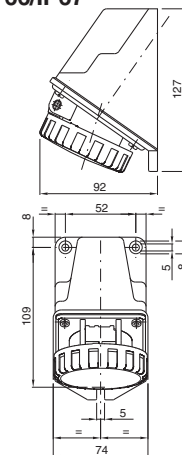
PANEL MOUNTING SOCKET OUTLETS - STRAIGHT REDUCED FLANGE - IP66/IP67



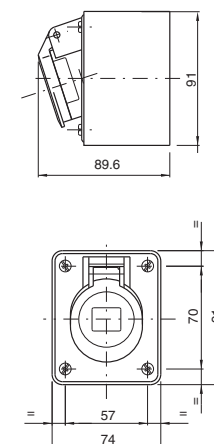
SURFACE MOUNTING SOCKET OUTLETS ANGLED BOX - IP44



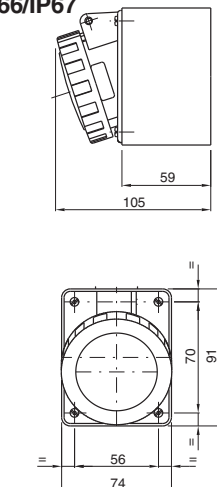
SURFACE MOUNTING SOCKET OUTLETS ANGLED BOX - IP66/IP67



SURFACE MOUNTING SOCKET OUTLETS STRAIGHT BOX - IP44



SURFACE MOUNTING SOCKET OUTLETS STRAIGHT BOX - IP66/IP67



(Dimensioni in mm)

(Dimensioni in mm)