

> INDUSTRIAL PLUGS AND SOCKETS



> VERSIONS

-  Plugs and connectors
-  Appliance inlets
-  Panel mounting appliance inlets
-  Angled panel mounting socket outlets
-  Panel mounting socket outlets angled box

> REFERENCE STANDARDS

EN 60309-1
Plugs, socket-outlets and couplers for industrial purposes
Part 1: general requirements

EN 60309-2
Plugs, socket-outlets and couplers for industrial purposes
Part 2: dimensional interchangeability requirements for pin and contact-tube accessories

> QUALITY MARKS



> TECHNICAL CHARACTERISTICS

Rated current:	16A - 32A - 63A - 125A
Rated voltage:	100÷690V~
Frequency:	c.c. - 50÷500Hz
Insulating voltage:	500/690V~
Protection degree:	IP44 - IP66/IP67
Operating temperature according to the reference standard:	-25°C+40°C
Max. operating temperature:	60°C
Glow Wire test:	650°C/850°C
Material:	Engineering plastic
IK degree at 20°C:	IK08
Cable inlets:	Cable sleeve IP44 Cable gland IP66/IP67

> BEHAVIOUR WITH CHEMICAL AND ATMOSPHERIC AGENTS

Saline solution	Acids		Bases		Solvents				Mineral oil	UV rays
	Concentrated	Diluted	Concentrated	Diluted	Hexane	Benzol	Acetone	Alcohol		
Resistant	Limited Resistance	Resistant	Resistant	Resistant	Limited Resistance	Limited Resistance	Resistant	Resistant	Resistant	Resistant

> WIRING AND INSTALLATION

Wiring capacity of the terminals (mm²)

Rated voltage	Rated current (A)	Plugs, connectors and appliance inlets		Socket outlets	
		Min	Max	Min	Max
Over 50V	16A	1	2,5	1,5	4
	32A	2,5	6	2,5	10
	63A	6	16	6	25
	125A	16	50	25	70

Max. cable size accepted by the cable clamp:

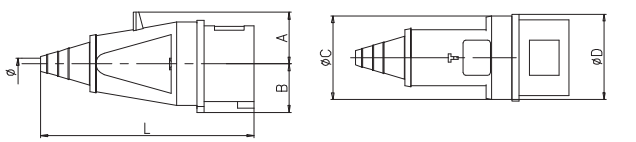
Rated current (A)	Outside Ø mm	
	Min	Max
16A	8	15
32A	11,5	21
63A	7	31
125A	26	48

> APPLICATION EXAMPLES



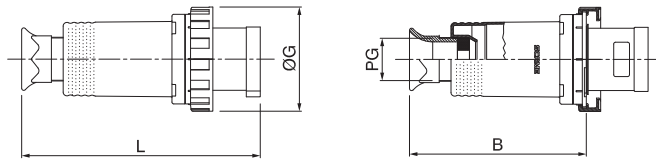
> DIMENSIONS

MOBILE PLUGS - IP44



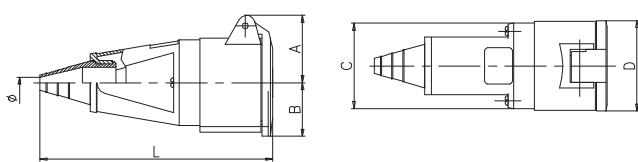
		L	B	Ø
16A	2P+E	135	58	7
	3P+E	142	67	7
	3P+N+E	159	76	9
32A	2P+E	174	79	9
	3P+E	174	79	9
	3P+N+E	180	88	10

MOBILE PLUGS - IP66/IP67



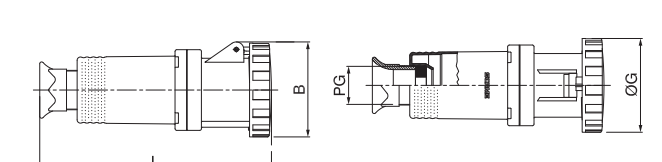
		ØG	B	L	PG
63A	2P+E	112	175	247	36
	3P+E	112	175	247	36
	3P+N+E	112	175	247	36
125A	2P+E	128	235	308	48
	3P+E	128	235	308	48
	3P+N+E	128	235	308	48

MOBILE CONNECTORS - IP44



		A	B	C	D	L	Ø
16A	2P+E	38	29	50	50	146	7
	3P+E	41	32	55	57	155	7
	3P+N+E	49	39	62	65	168	9
32A	2P+E	47	39	56	65	182	9
	3P+E	47	39	56	65	182	9
	3P+N+E	51	42	69	71	193	13

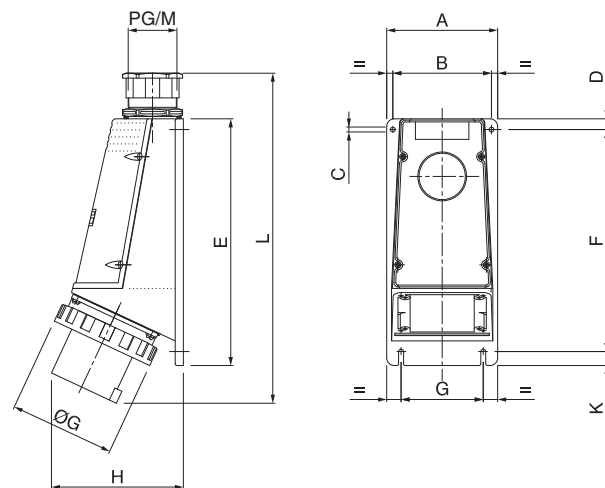
MOBILE CONNECTORS - IP66/IP67



		ØG	B	L	PG
63A	2P+E	112	114	257	36
	3P+E	112	114	257	36
	3P+N+E	112	114	257	36
125A	2P+E	128	128	324	48
	3P+E	128	128	324	48
	3P+N+E	128	128	324	48

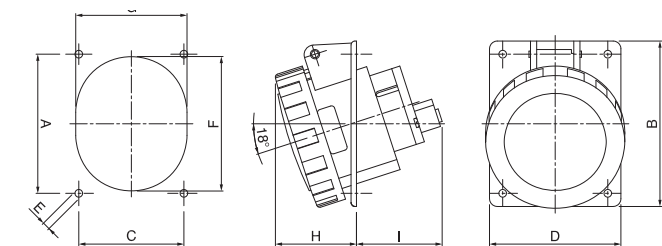
APPLIANCE INLETS - IP66/IP67

		A	B	C	D	E	F	G	H	K	L	PG/M	ØG
63A	2P+E	120	200	45	137	235	205	80	131	15	267	29/32	112
	3P+E	123	205	46	141	235	205	80	131	15	267	29/32	112
	3P+N+E	120	203	45	141	235	205	80	131	15	267	29/32	112
125A	2P+E	124	215	46	151	300	270	100	159	17	346	48/63	128
	3P+E	120	223	45	160	300	270	100	159	17	346	48/63	128
	3P+N+E	126	220	46	154	300	270	100	159	17	346	48/63	128



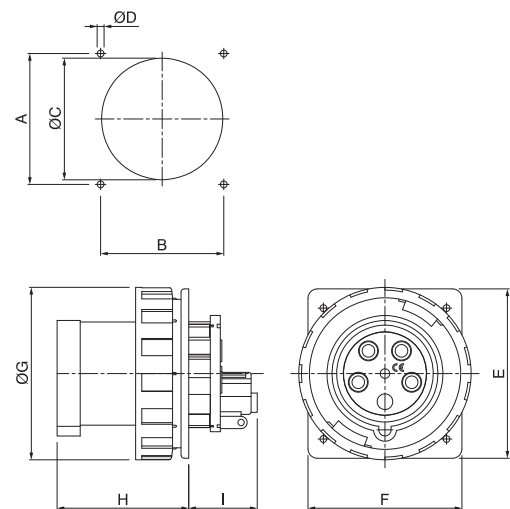
PANEL MOUNTING SOCKET OUTLETS - IP66/IP67

		A	B	C	D	E	F	G	H	I
63A	2P+E	85	110	80	100	4.5	92	80	63	89
	3P+E	85	110	80	100	4.5	92	80	63	89
	3P+N+E	85	110	80	100	4.5	92	80	63	89
125A	2P+E	90	114	90	114	6	104	92	92	101
	3P+E	90	114	90	114	6	104	92	92	101
	3P+N+E	90	114	90	114	6	104	92	92	101



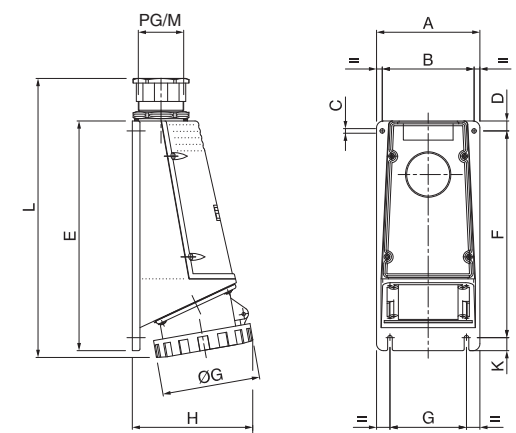
APPLIANCE INLETS - IP66/IP67

		A	B	ØC	ØD	E	F	ØG	H	I
63A	2P+E	85	80	79	4.5	110	100	112	88.5	44.5
	3P+E	85	80	79	4.5	110	100	112	88.5	44.5
	3P+N+E	80	85	79	4.5	110	100	112	88.5	44.5
125A	2P+E	100	100	90	6	114	114	128.5	97	53.5
	3P+E	100	100	90	6	114	114	128.5	97	53.5
	3P+N+E	100	100	90	6	114	114	128.5	97	53.5



REDUCED FLANGE PANEL MOUNTING SOCKET OUTLETS - IP66/IP67 (63A - 125A)

		A	B	C	D	E	F	G	H	K	L	PG/M	ØG
63A	2P+E	115	96	6	10	235	205	80	125	15	267	29/32	112
	3P+E	115	96	6	10	235	205	80	125	15	267	29/32	112
	3P+N+E	115	96	6	10	235	205	80	125	15	267	29/32	112
125A	2P+E	135	120	6	13	300	270	100	157	17	346	48/63	128
	3P+E	135	120	6	13	300	270	100	157	17	346	48/63	128
	3P+N+E	135	120	6	13	300	270	100	157	17	346	48/63	128



(Dimensioni in mm)

(Dimensioni in mm)