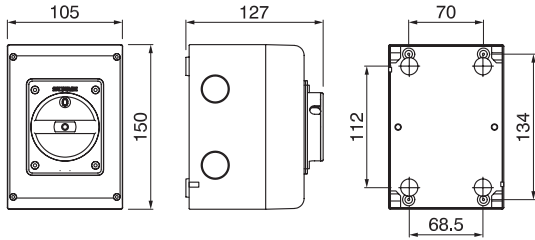


DC ISOLATORS

ART. 590.DCGE0815
590.DCGE0820

WARNING:
INTERNAL
CONTACTS SWITCH
LINKING IS NEEDED



FOR A DIFFERENT
INTERNAL CONTACTS
SWITCH LINKING FOLLOW
THE WIRING DIAGRAM
OPTIONS SHOWN BELOW

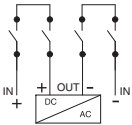
WIRES RANGE AND TIGHTENING TORQUE

Wire range	1,5 - 16mm ²
Max Tightening torque	2Nm
Wire strip lenght	10mm

590.DCGE0815

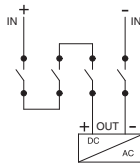
(SINGLE STRING 2 POLES) - 4 CONTACTS IN SERIES (2+2) OR (3+1)

Provided pre-wired linking
Bottom incoming
and outgoing (2+2) series



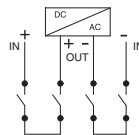
Option 1

Top incoming
Bottom outgoing (3+1) series



Option 2

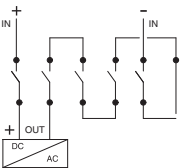
Top incoming
and outgoing (2+2) series



590.DCGE0820

(SINGLE STRING 2 POLES) - 5 CONTACTS IN SERIES (4+1)

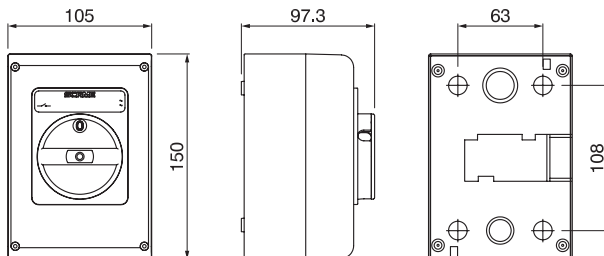
Provided pre-wired linking
Top incoming
Bottom outgoing (4+1) series



DC ISOLATORS

ART. 590.DCGE0416

**WARNING:
INTERNAL
CONTACTS SWITCH
LINKING IS NEEDED**



**FOR A DIFFERENT
INTERNAL CONTACTS
SWITCH LINKING FOLLOW
THE WIRING DIAGRAM
OPTIONS SHOWN BELOW**

WIRES RANGE AND TIGHTENING TORQUE

Wire range	1,5 - 10mm ²
Max Tightening torque	0,8Nm
Wire strip length	10mm

POSSIBLE CONTACTS SWITCH LINKING

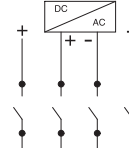
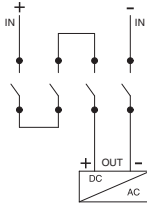
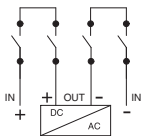
590.DCGE0416

(SINGLE STRING 2 POLES) - 4 CONTACTS IN SERIES (2+2) OR (3+1)

Provided pre-wired linking
Bottom incoming
and outgoing (2+2) series

Option 1
Top incoming
Bottom outgoing (3+1) series

Option 2
Top incoming
and outgoing (2+2) series



InfoTECH

ITALY

WORLDWIDE

Numero Verde
800-018009

ScameOnLine
www.scame.com
infotech@scame.com